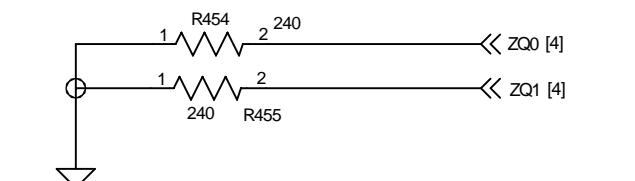
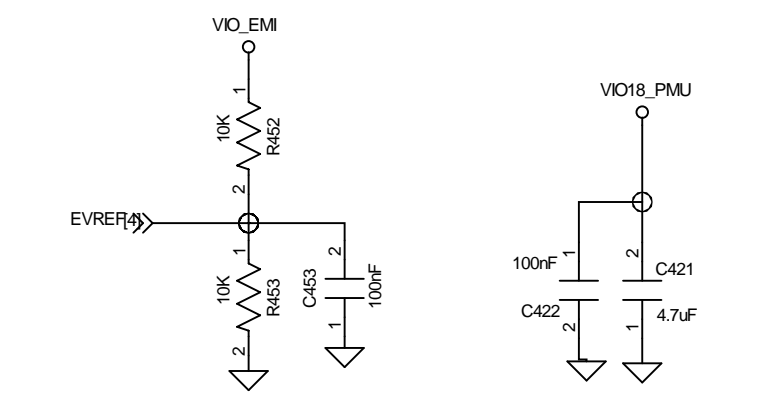
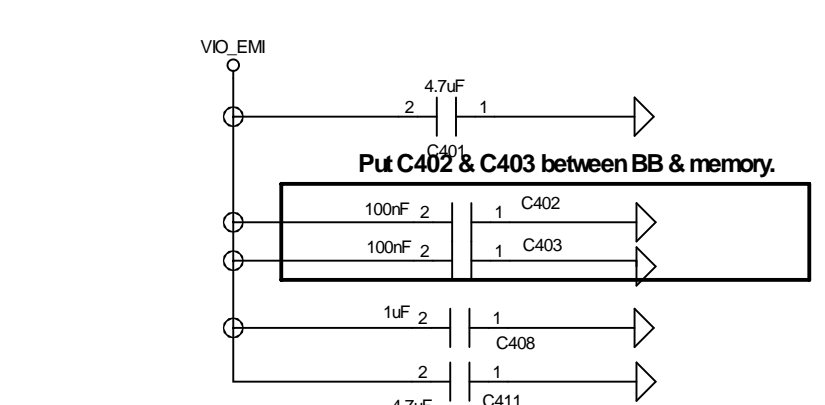
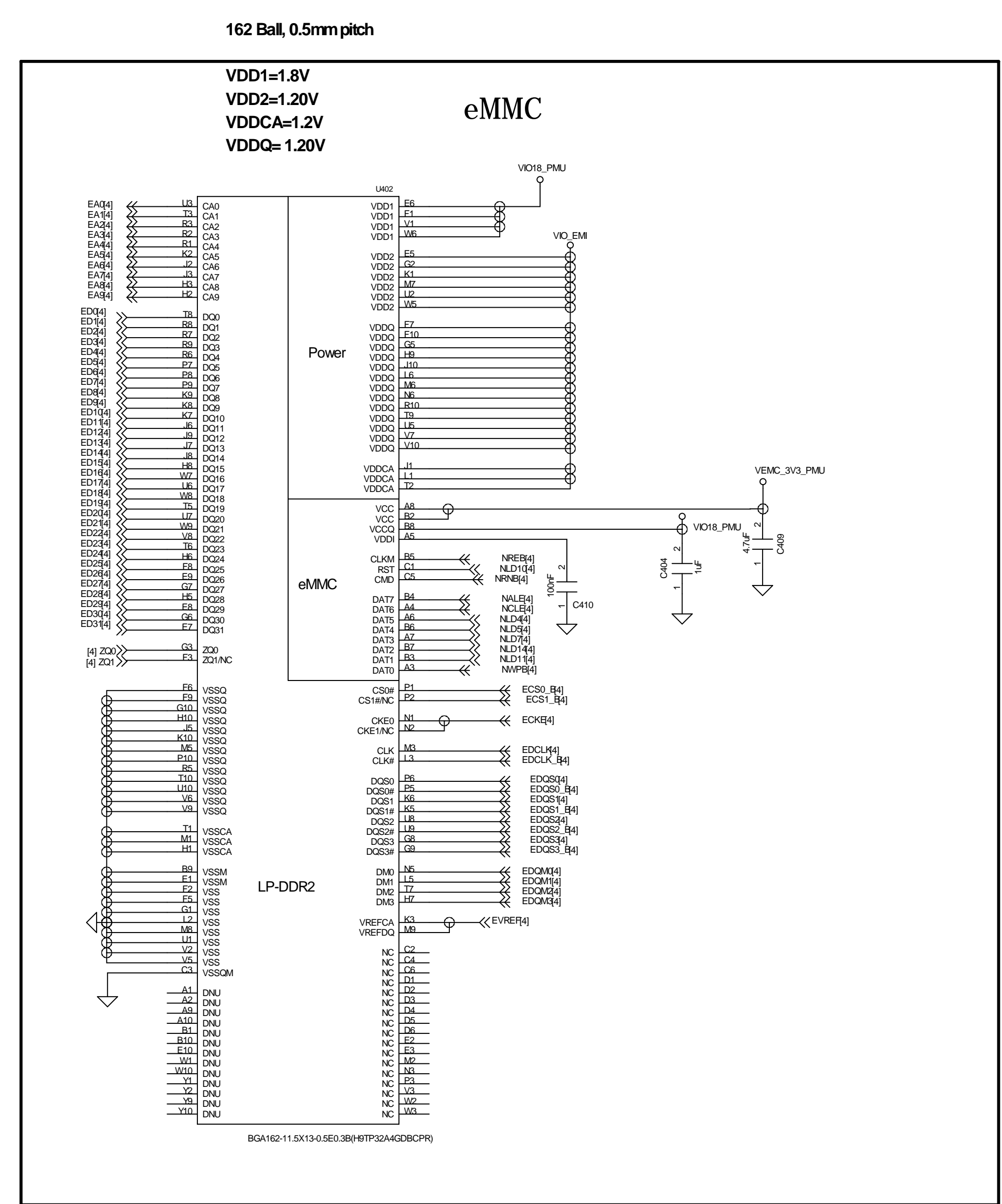
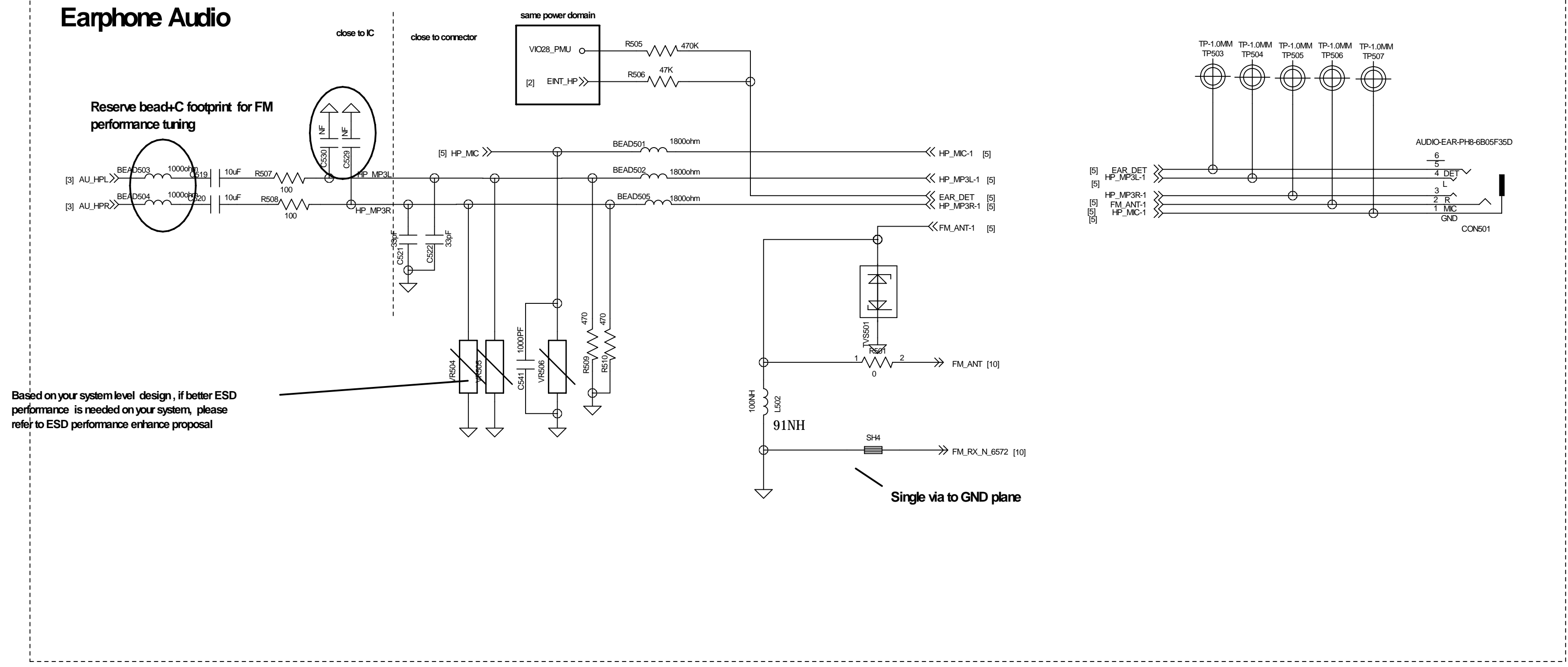


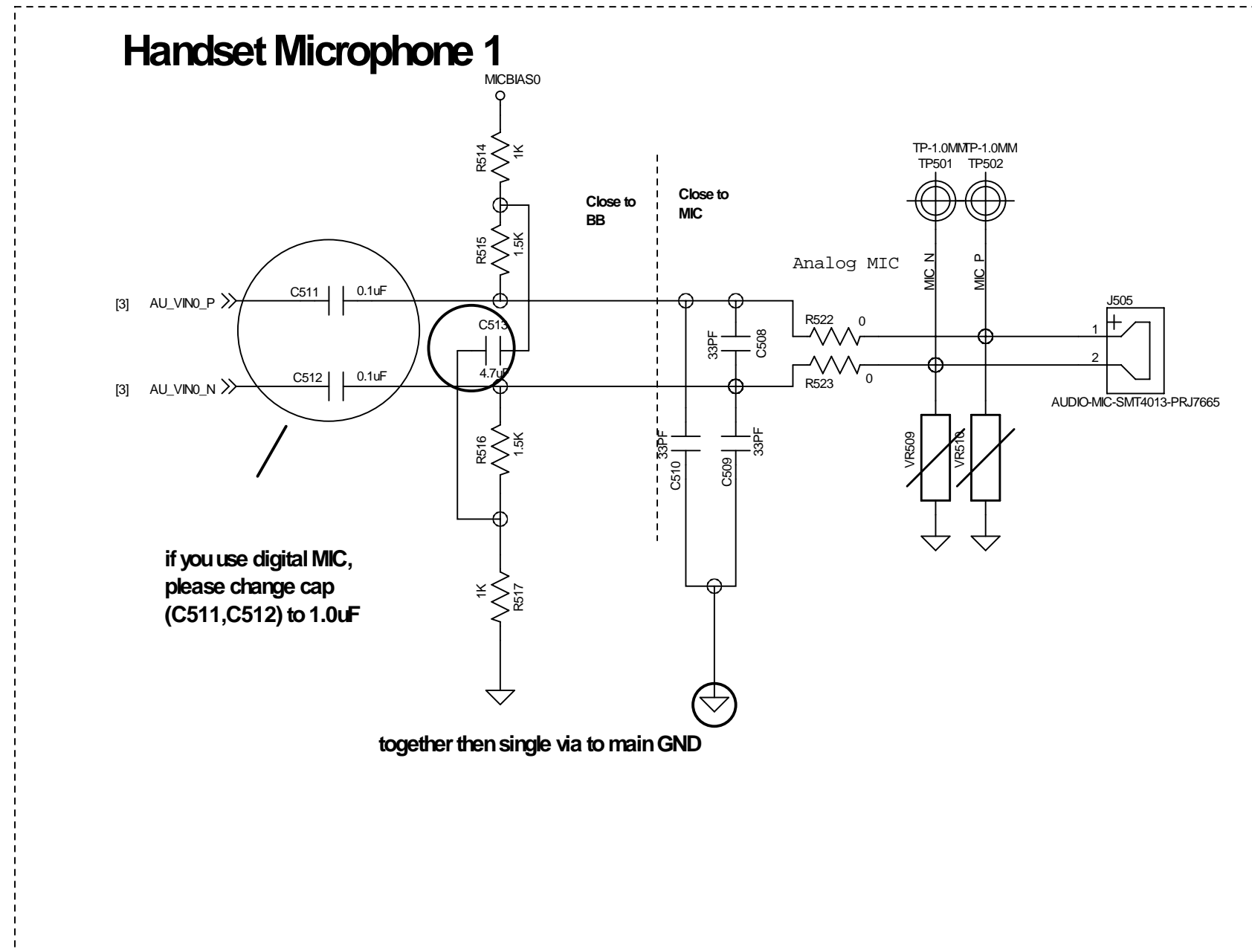
Please make sure the ball map is match to MCP type



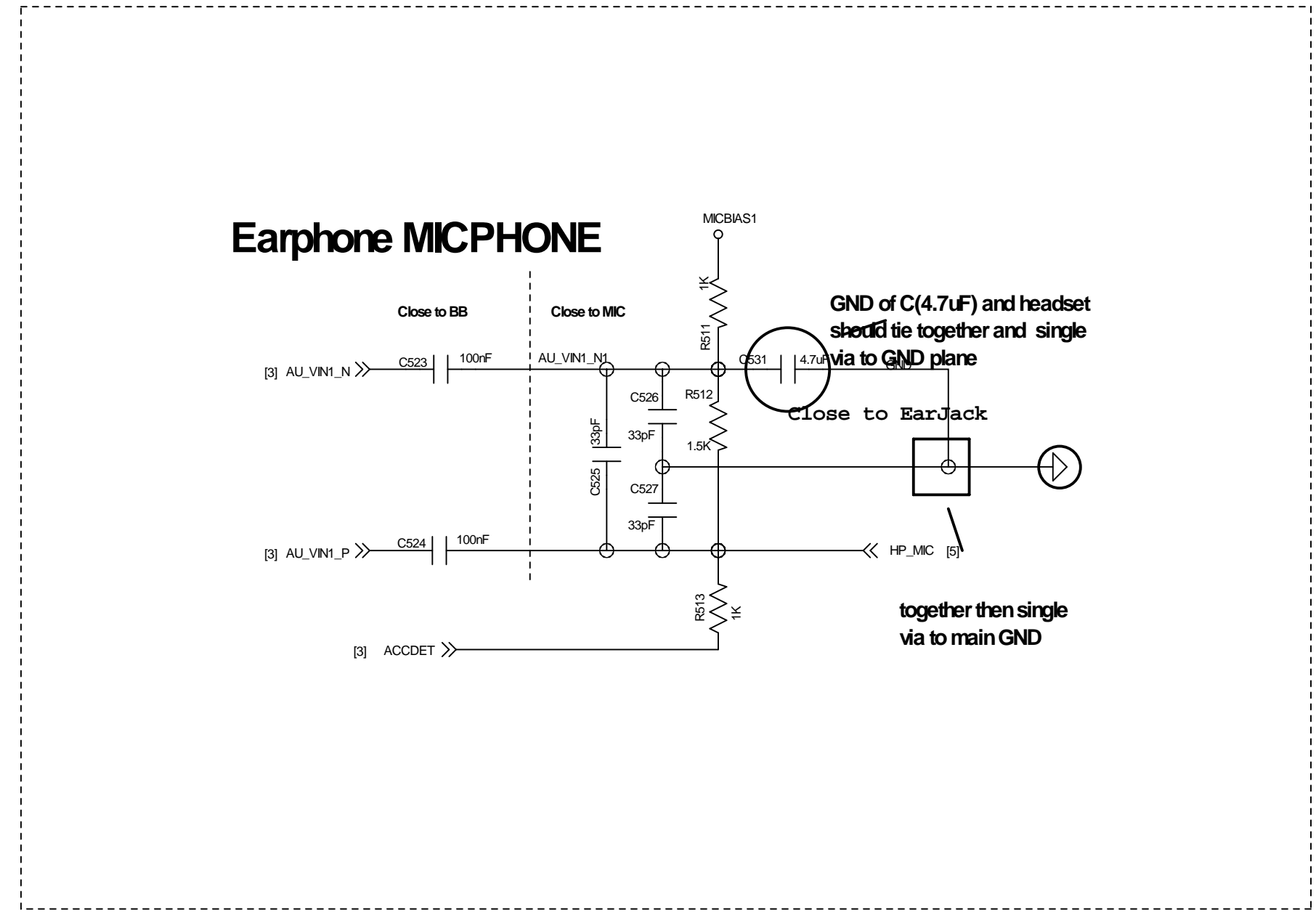
Earphone Audio



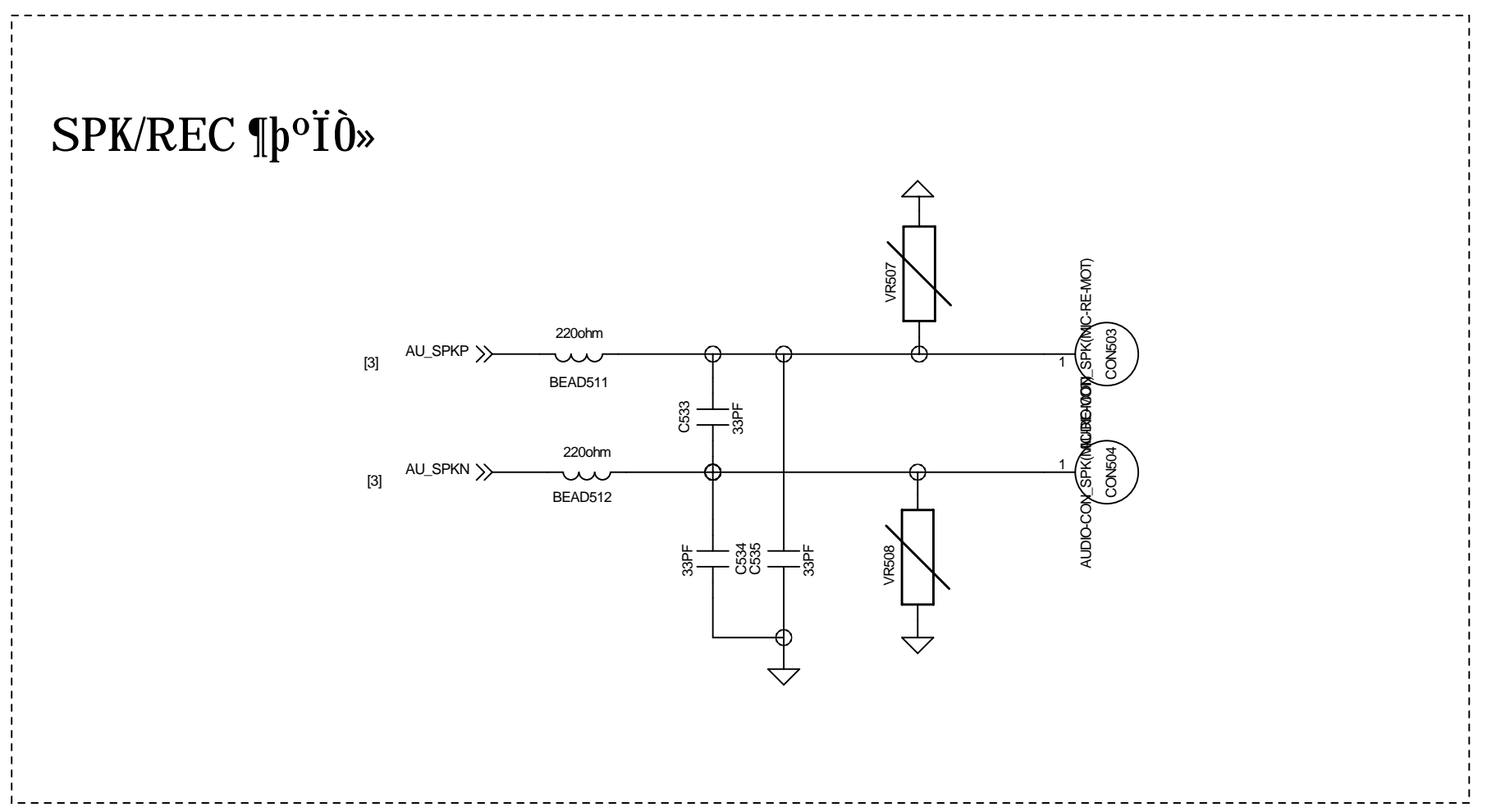
Handset Microphone 1

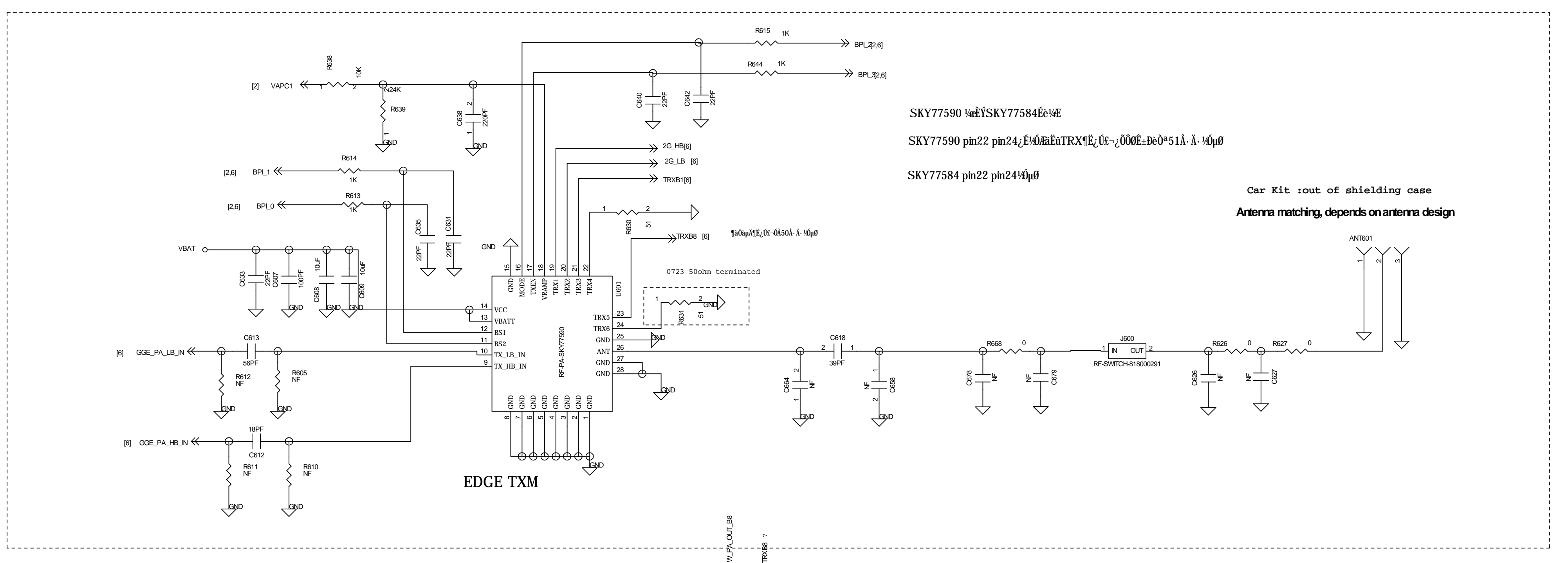
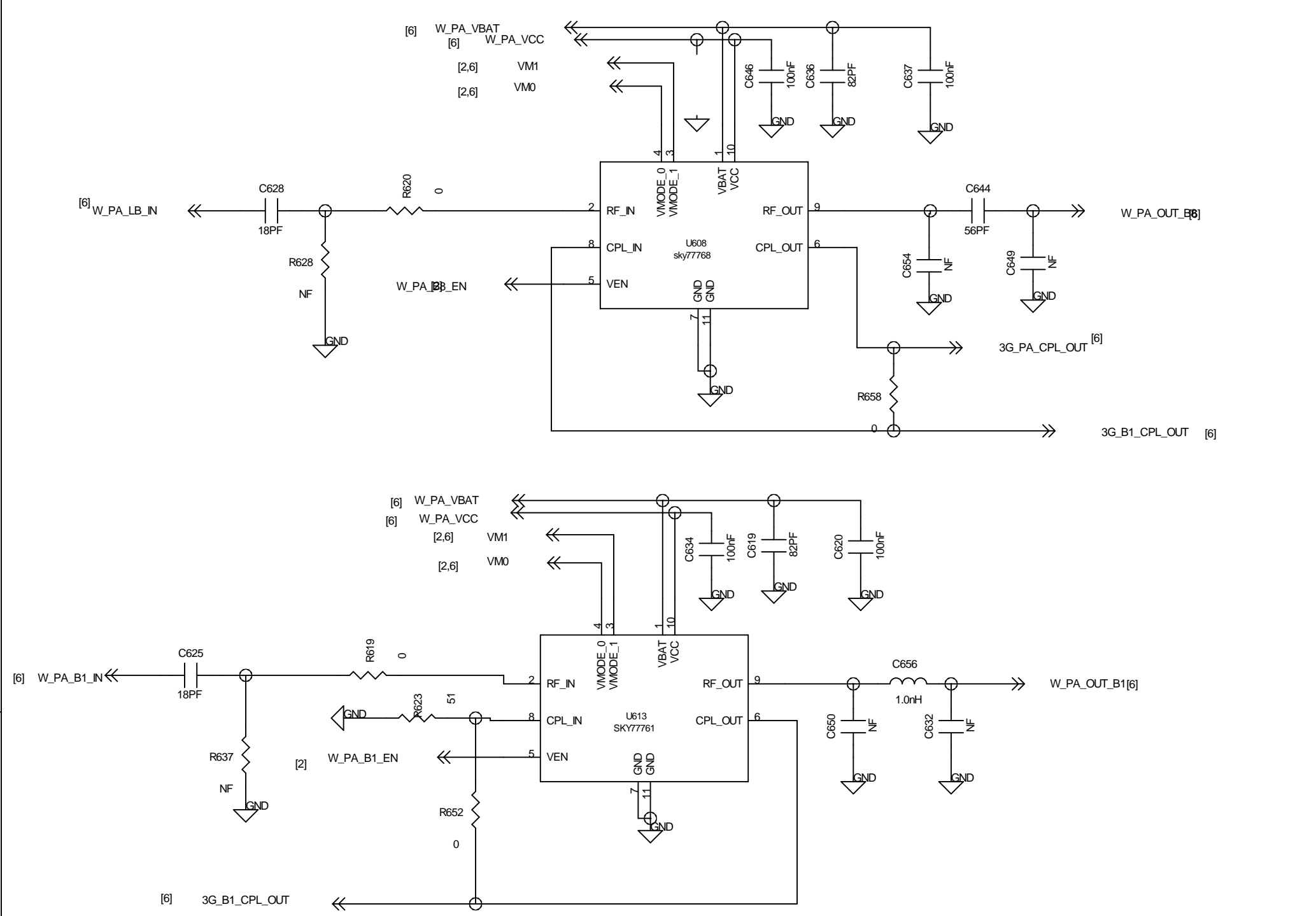


Earphone MICPHONE

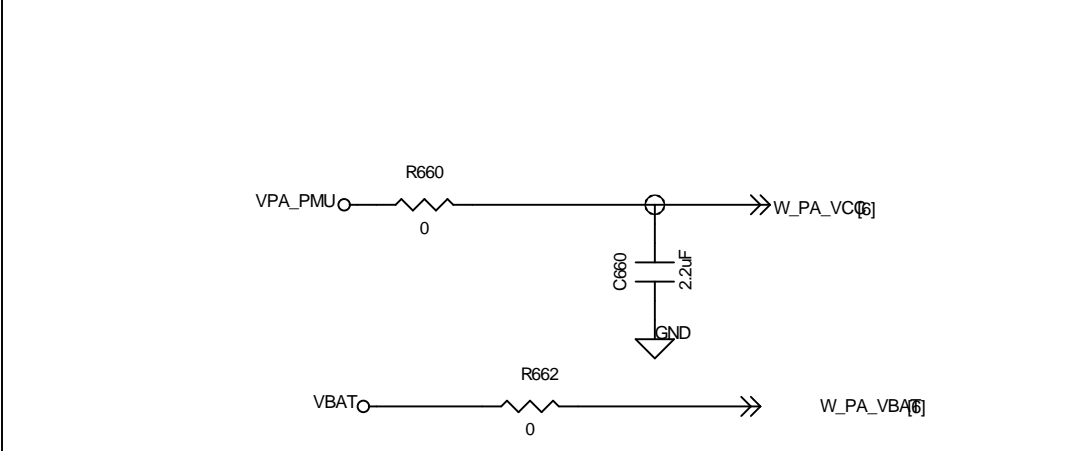


SPK/REC



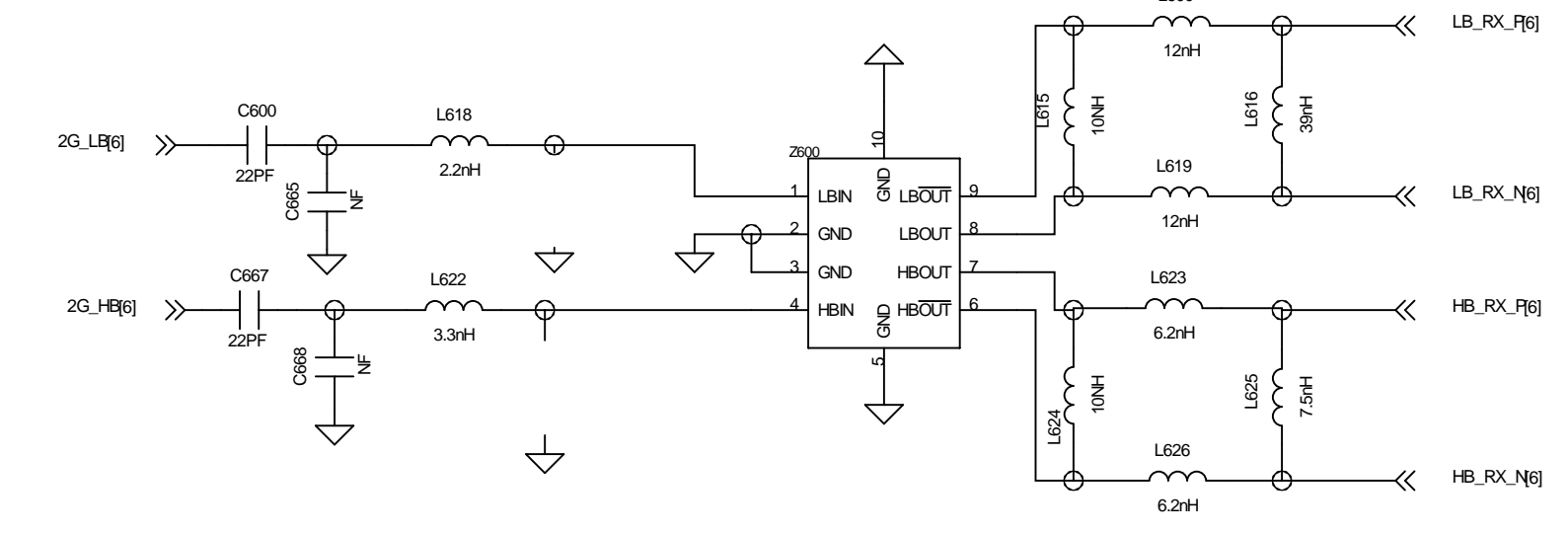
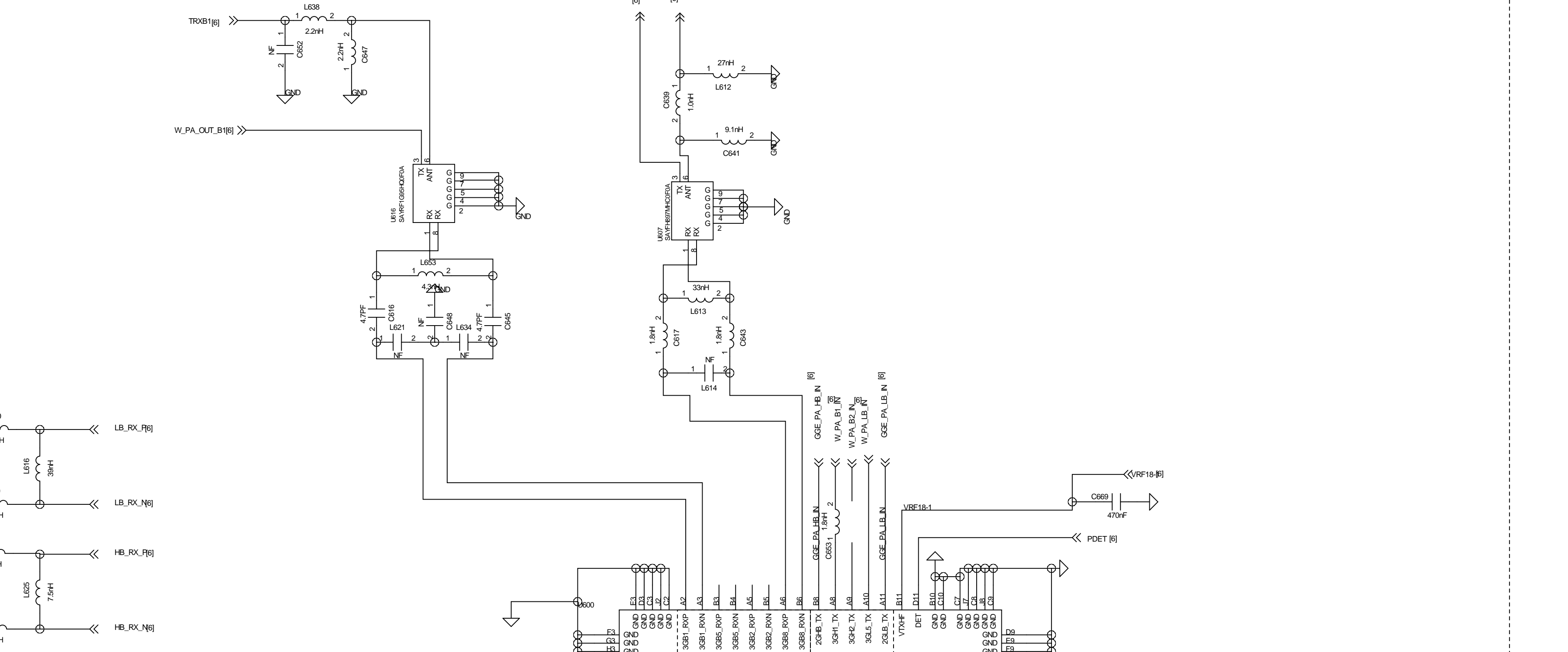
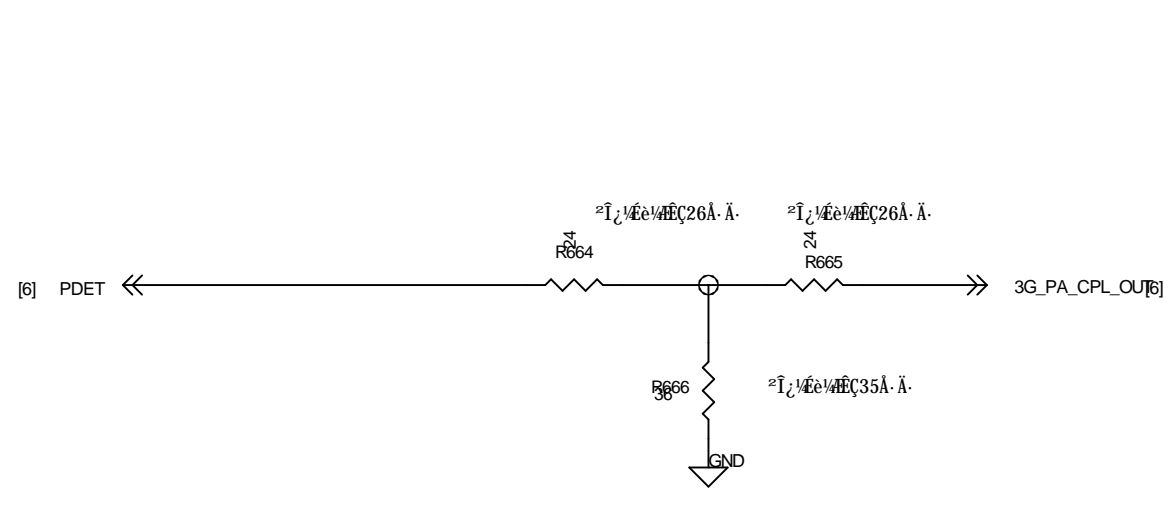


SKY77590 and SKY77584 PA
 SKY77590 pin22 pin24, EDGE TXM TX1_LB, TX1_HB, TX2_LB, TX2_HB, TX3_LB, TX3_HB, TX4_LB, TX4_HB, TX5_LB, TX5_HB, TX6_LB, TX6_HB
 SKY77584 pin22 pin24, EDGE TXM TX1_LB, TX1_HB, TX2_LB, TX2_HB, TX3_LB, TX3_HB, TX4_LB, TX4_HB, TX5_LB, TX5_HB, TX6_LB, TX6_HB
 Car Kit : out of shielding case
 Antenna matching, depends on antenna design

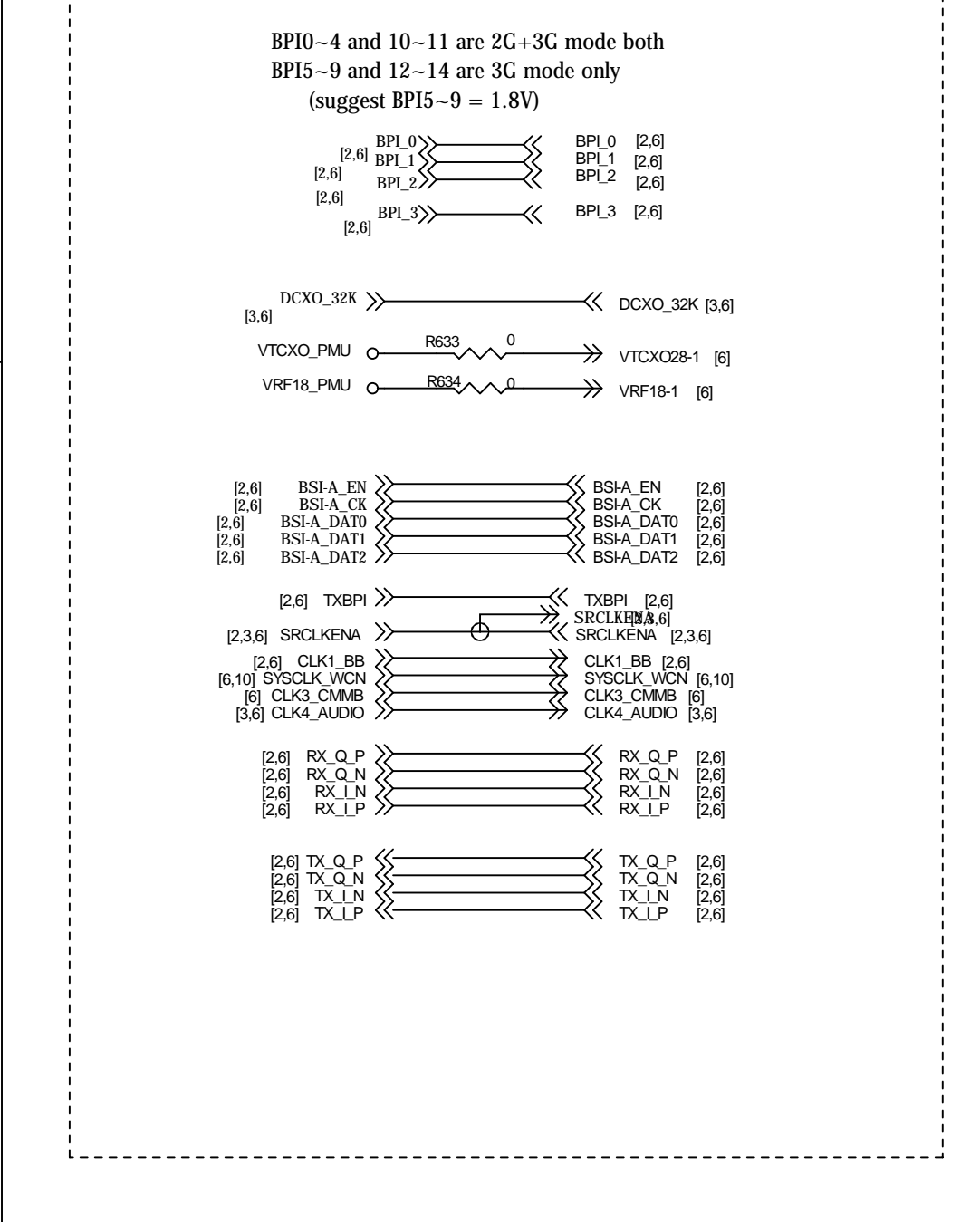
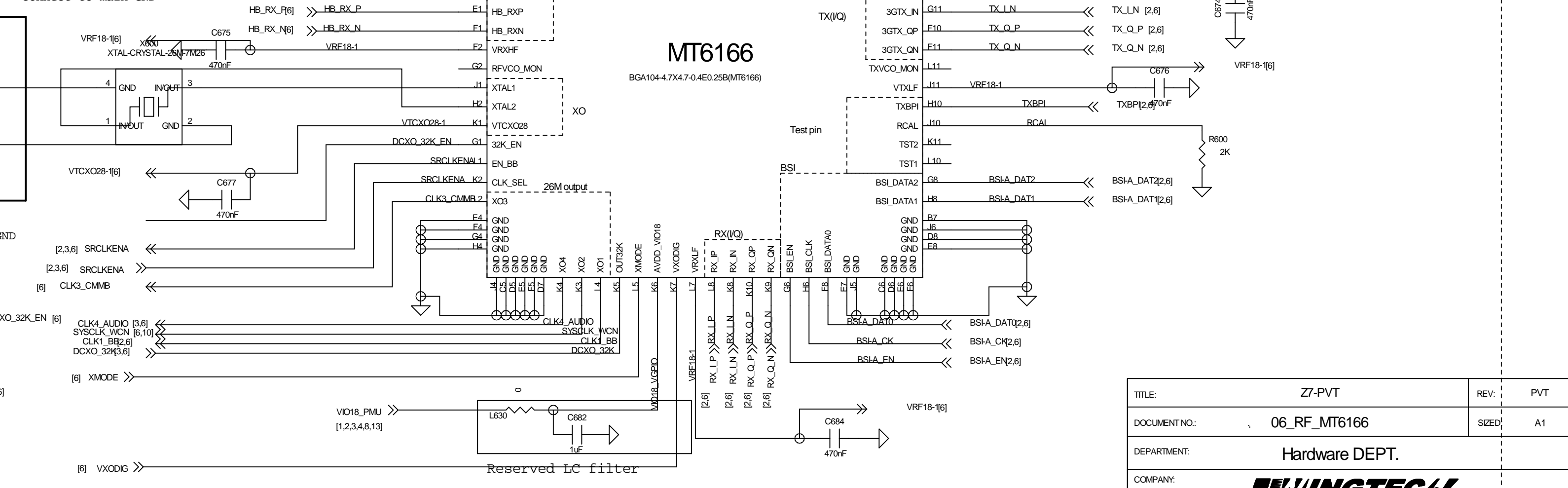
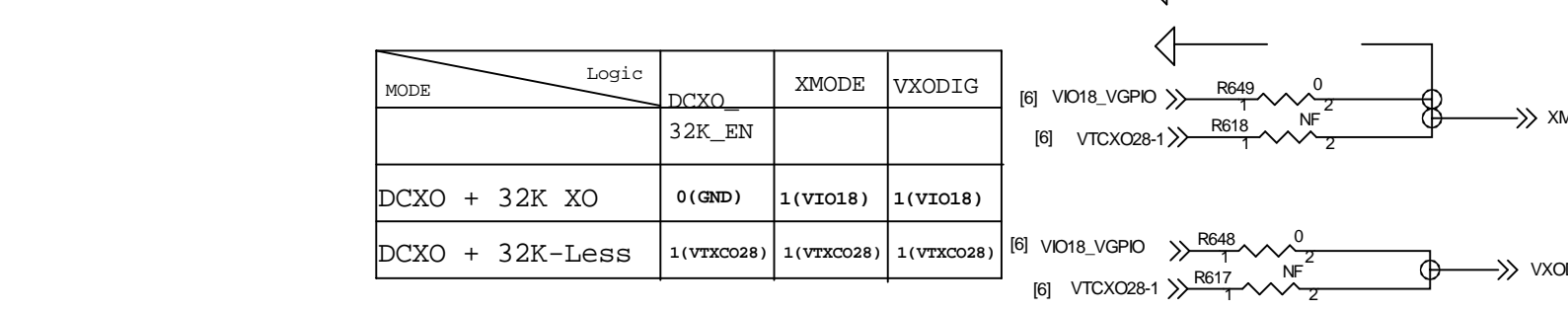
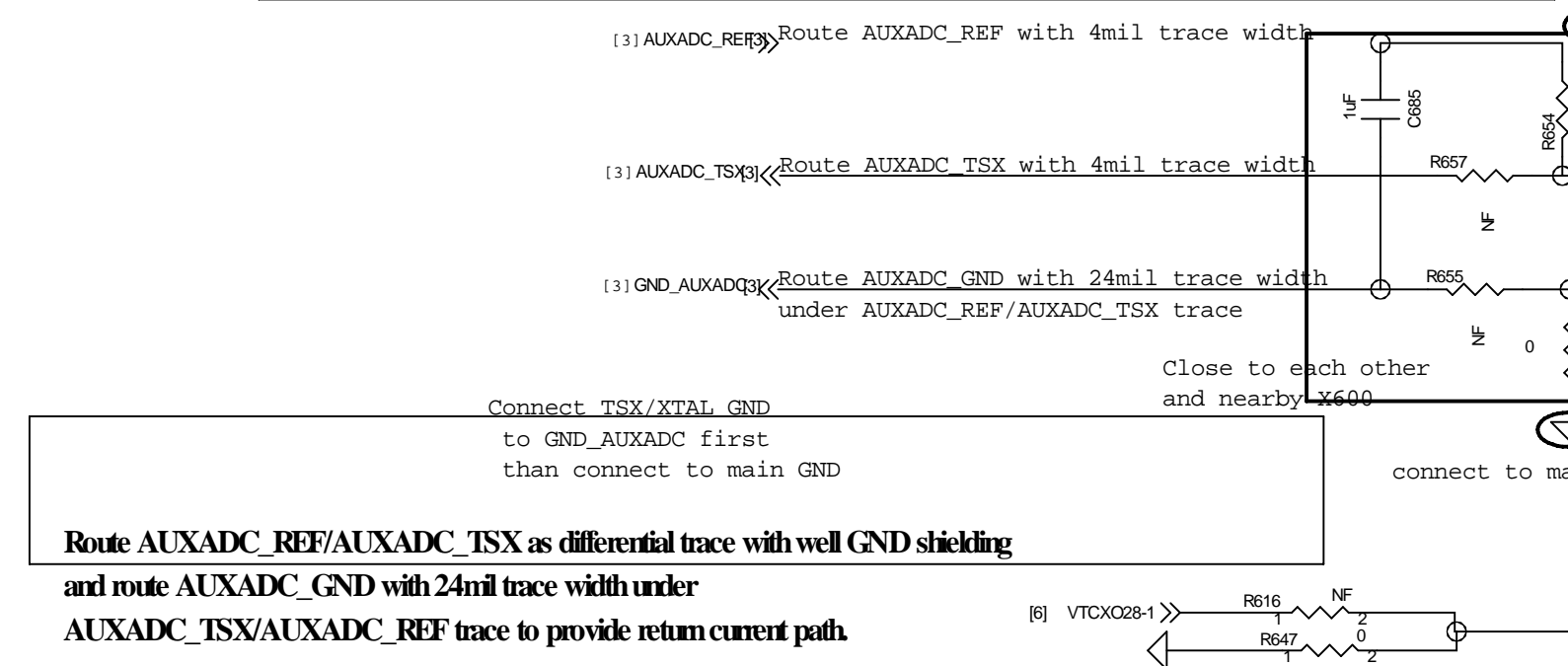


SKY77590 control logic table

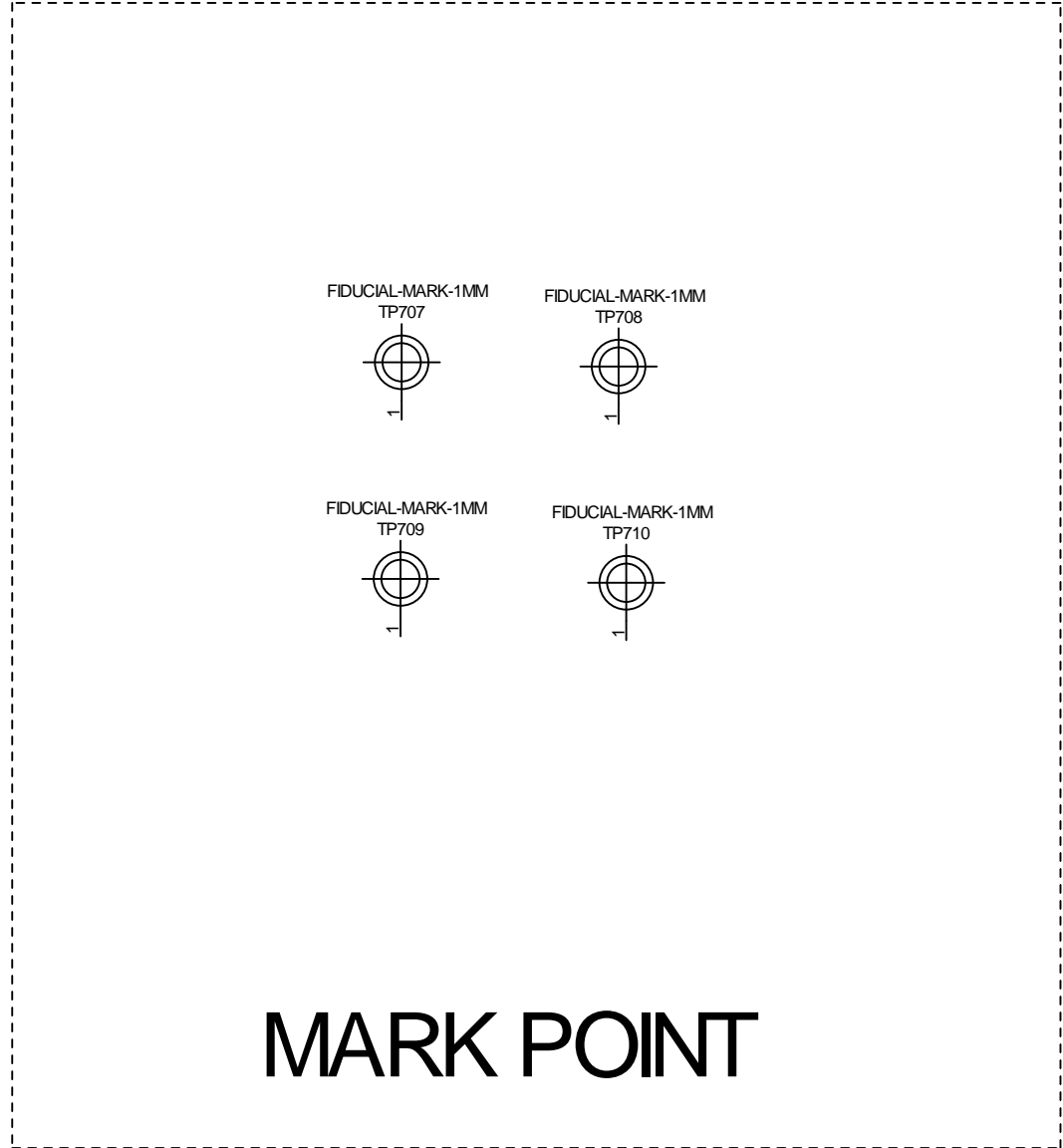
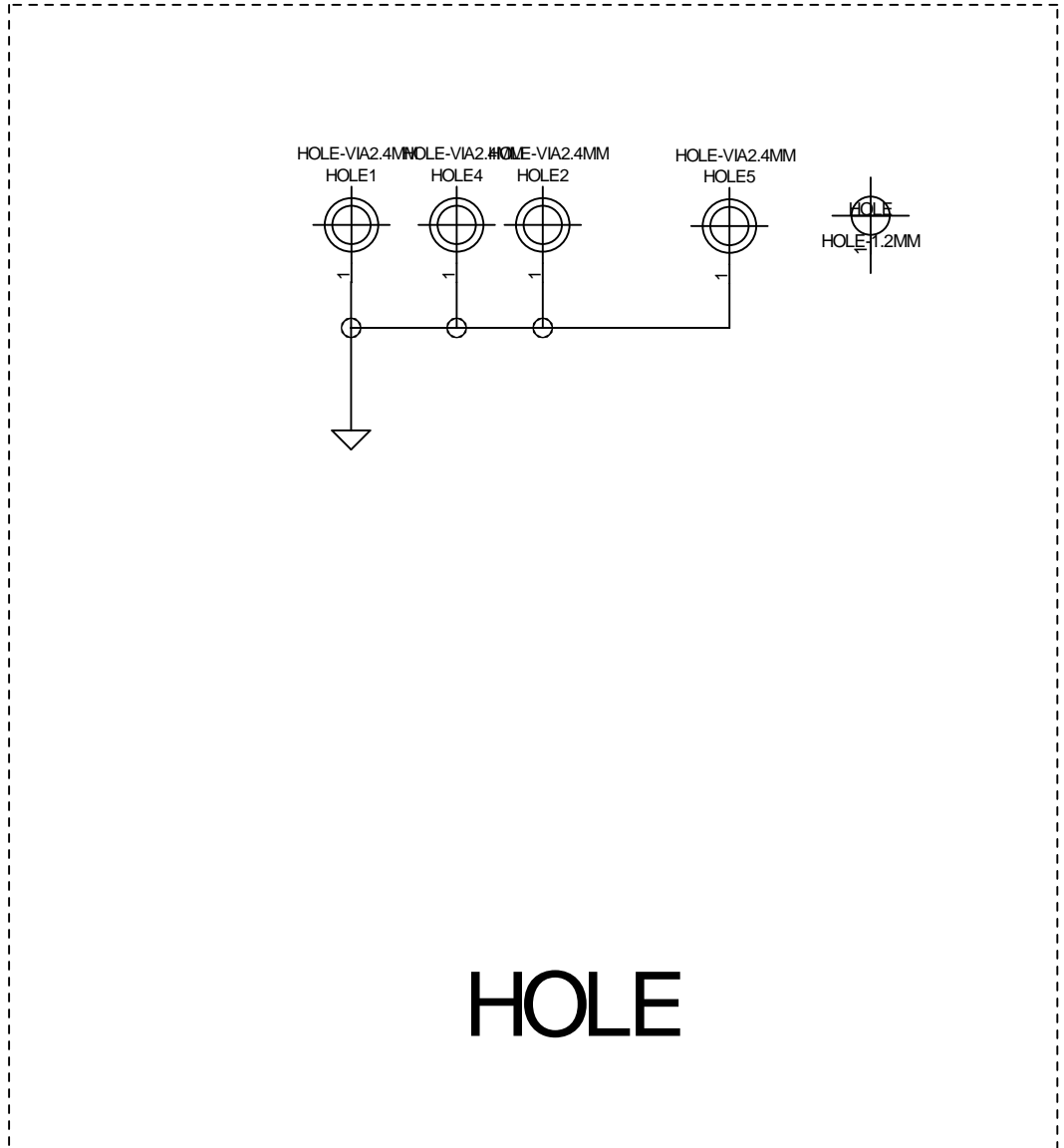
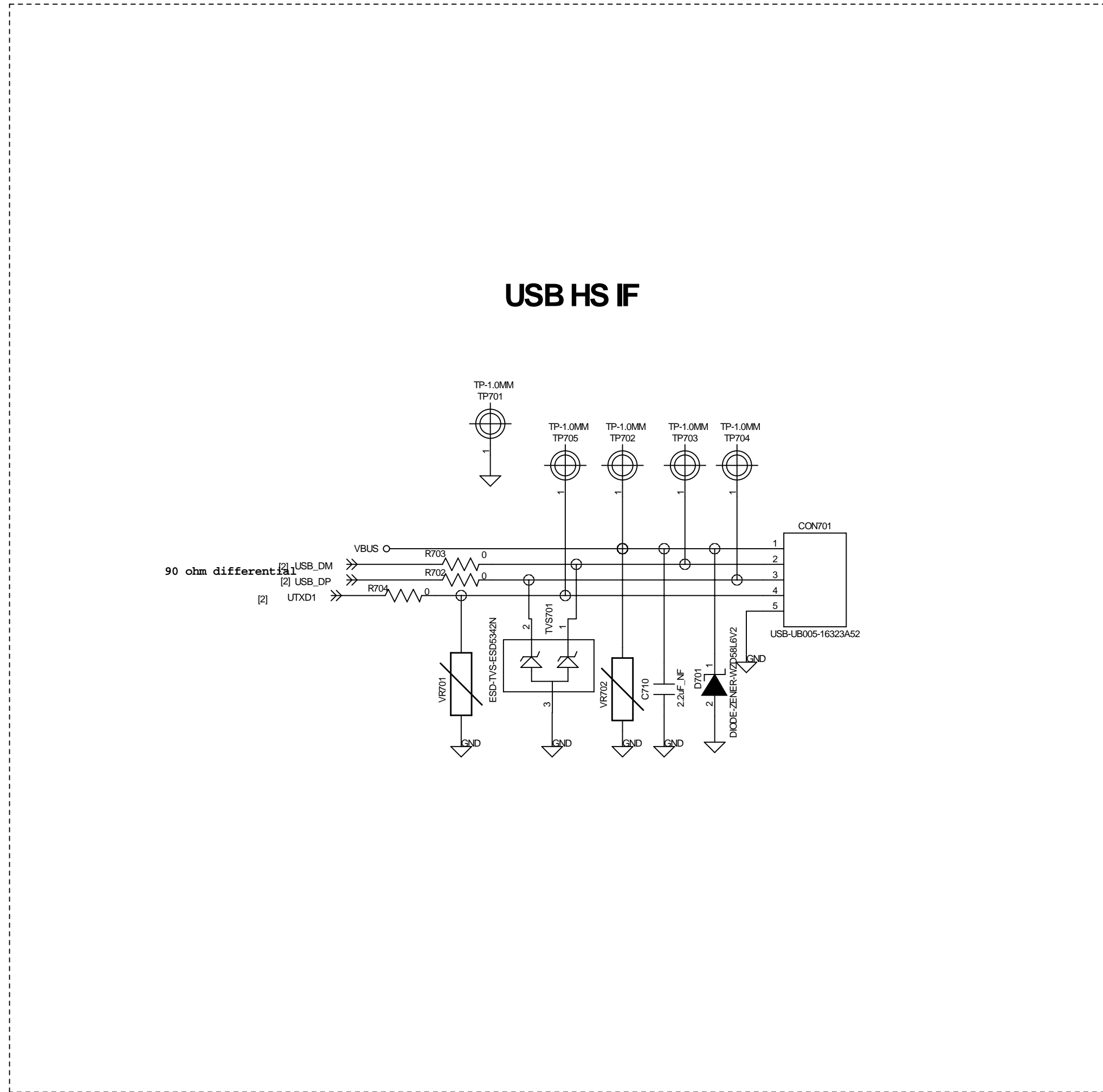
	VctA	VctB	VctC	TxE
	BS2	BS1	mode	ebable
(TRX1)G_DCS	L	L	H	L
(TRX2)W_Band8	L	H	H	L
(TRX3)W_Band1	H	L	H	L
(TRX4)W_Band5	H	H	L	L
(TRX5)W_Band2	L	H	L	L
(TRX6) NA	H	L	L	L
EDGETX_L	H	L	H	H
EDGETX_H	H	H	H	H
GMSKTX_L	H	L	L	H
GMSKTX_H	H	H	L	H



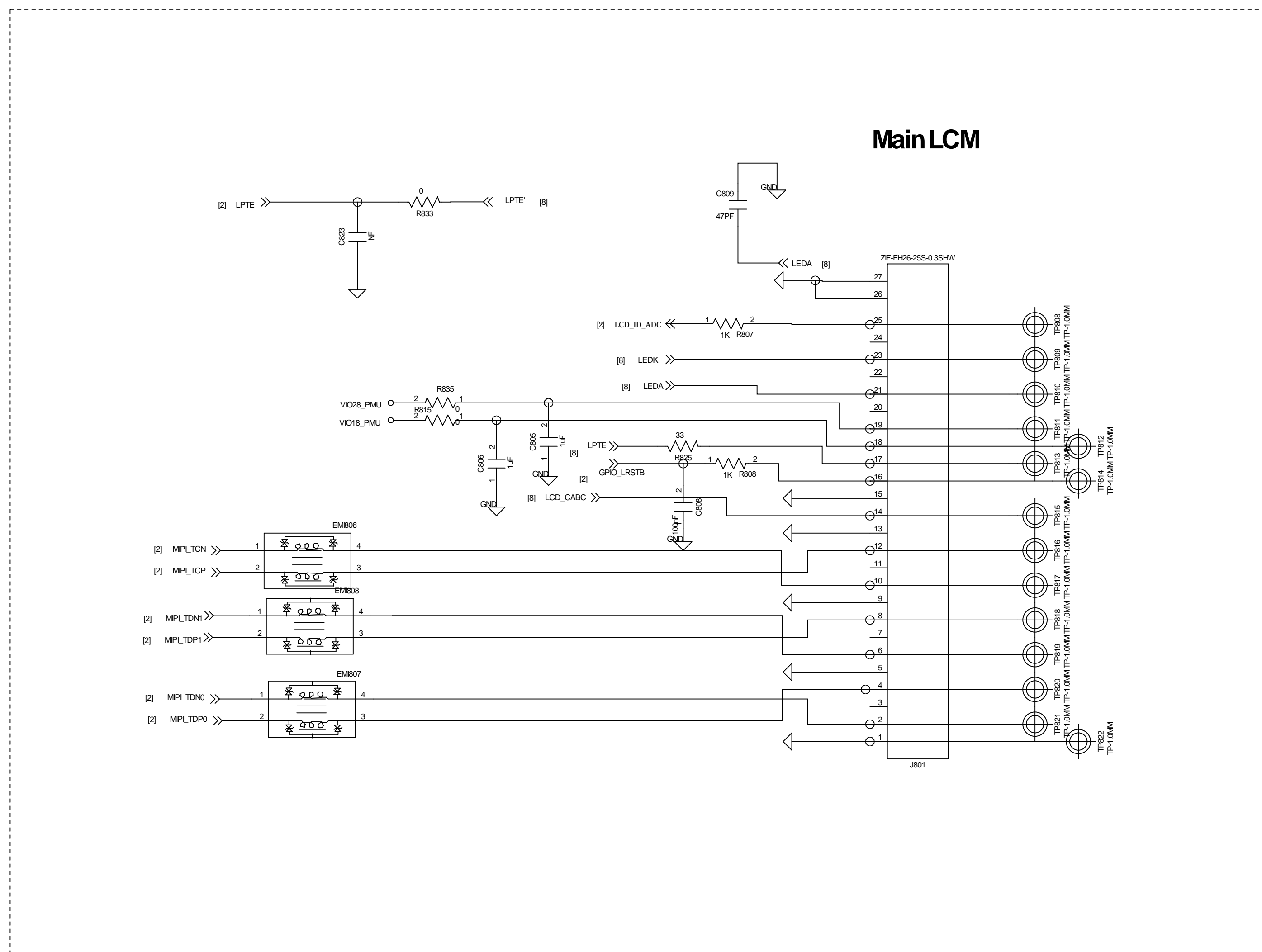
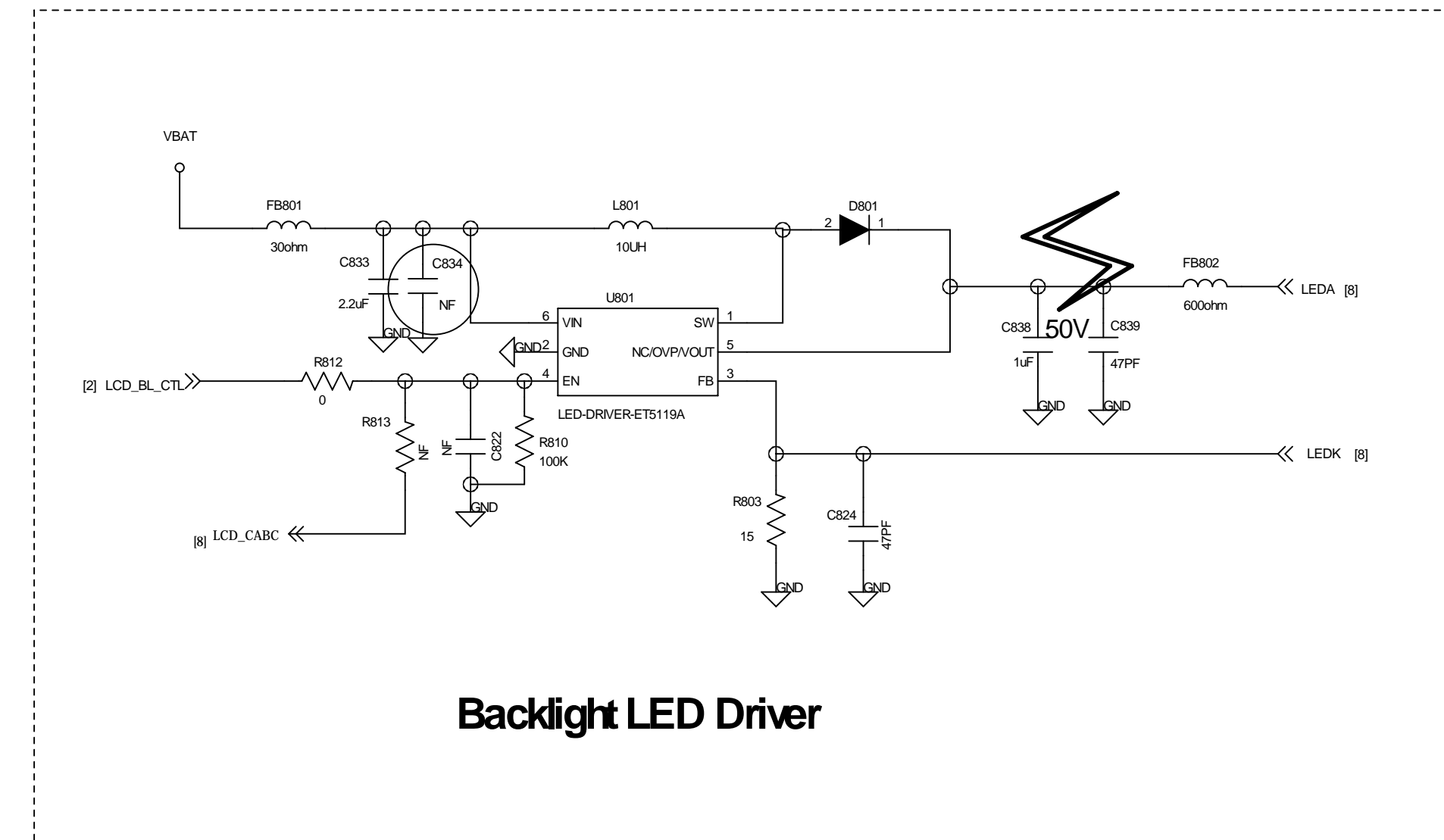
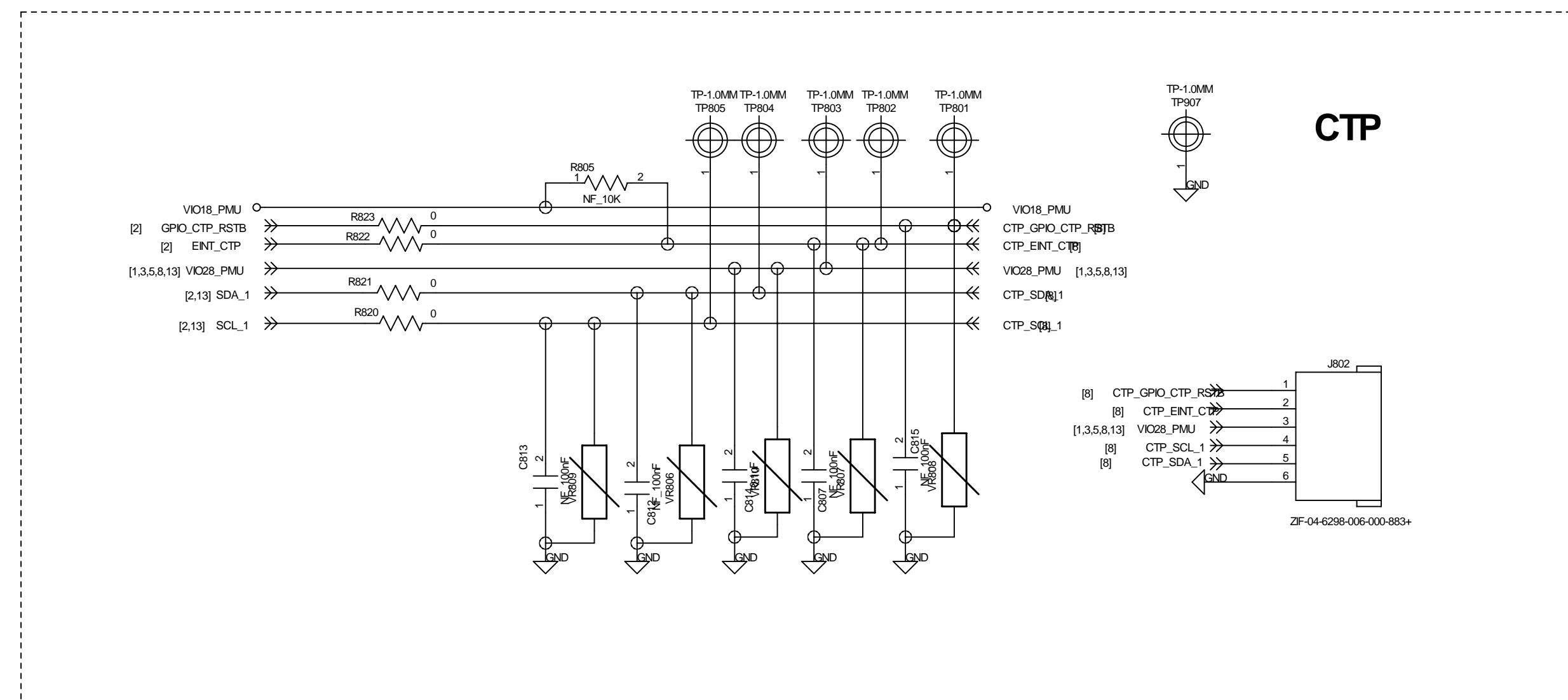
Two Application Circuit Conditions.
 1. TSX Circuit : X600=TSX, R653=R656=NC, R654=100K+-1%, R655=R657=0ohm
 2. XTAL Circuit : X600=Mobile XTAL, R653=R656=0ohm, R654=R655=R657=NC



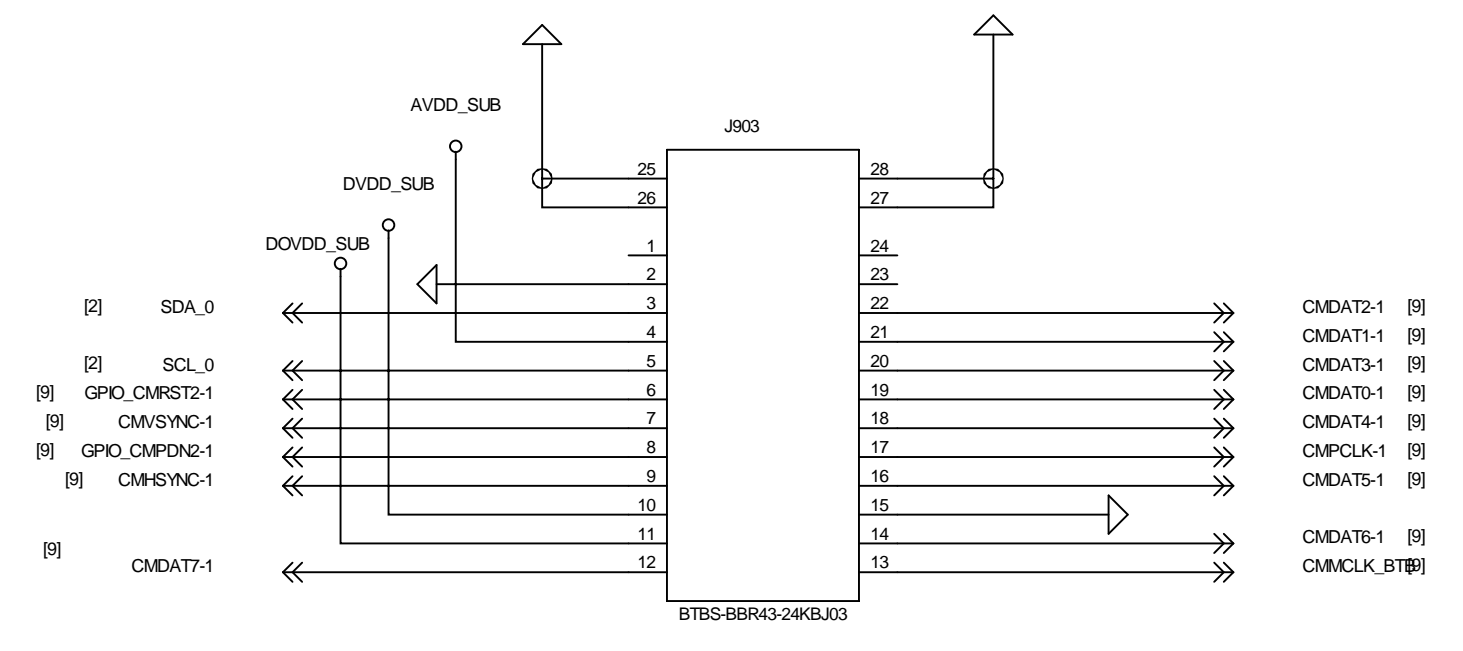
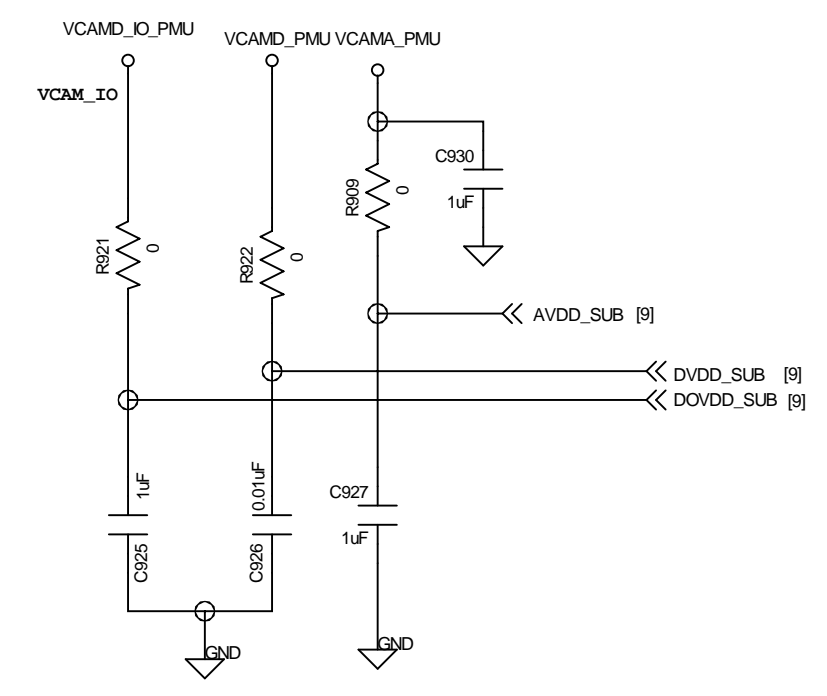
MODE	Logic	DCXO	XMODE	VXODIG
DCXO + 32K XO	0 (2ND)	1 (V2O18)	1 (V2O18)	
DCXO + 32K-Less	1 (V2K028)	1 (V2K028)	1 (V2K028)	



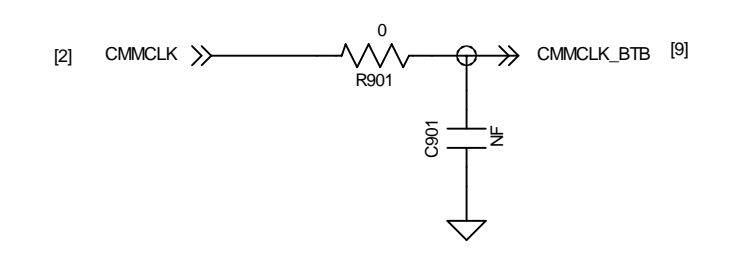
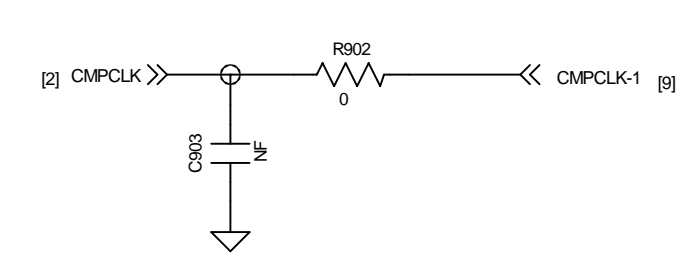
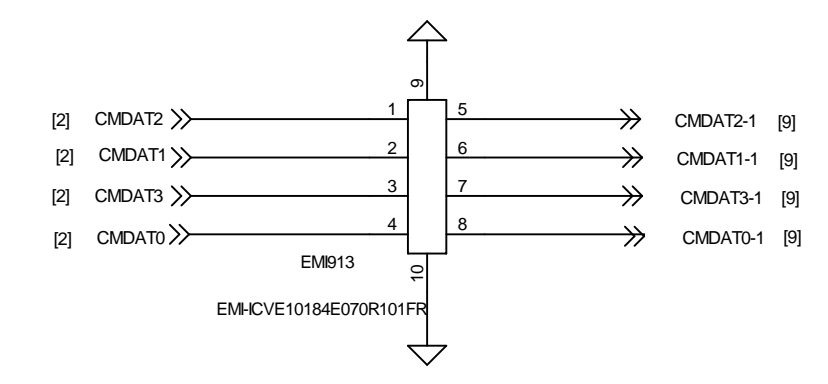
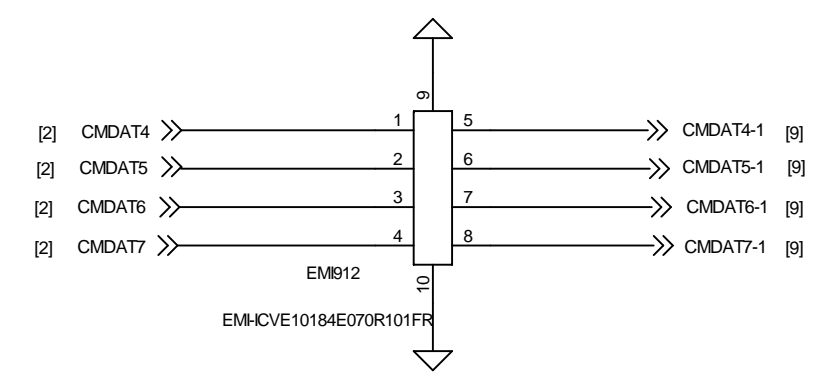
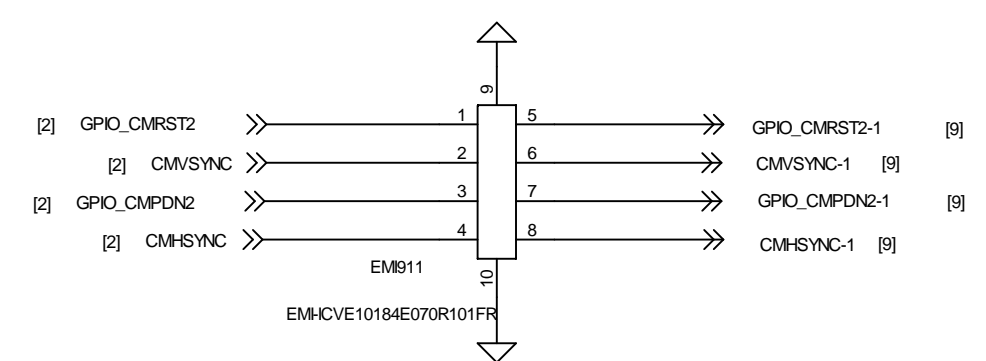
TITLE:	Z7-PVT	REV:	PVT
DOCUMENT NO:	07_USB	SIZE:	A1
DEPARTMENT:	Hardware DEPT.		
COMPANY:	WINGTEC		
DESIGNER:	<DESIGNER>	Last Saved Date:	<undefined>
		SHEET:	7 OF 13



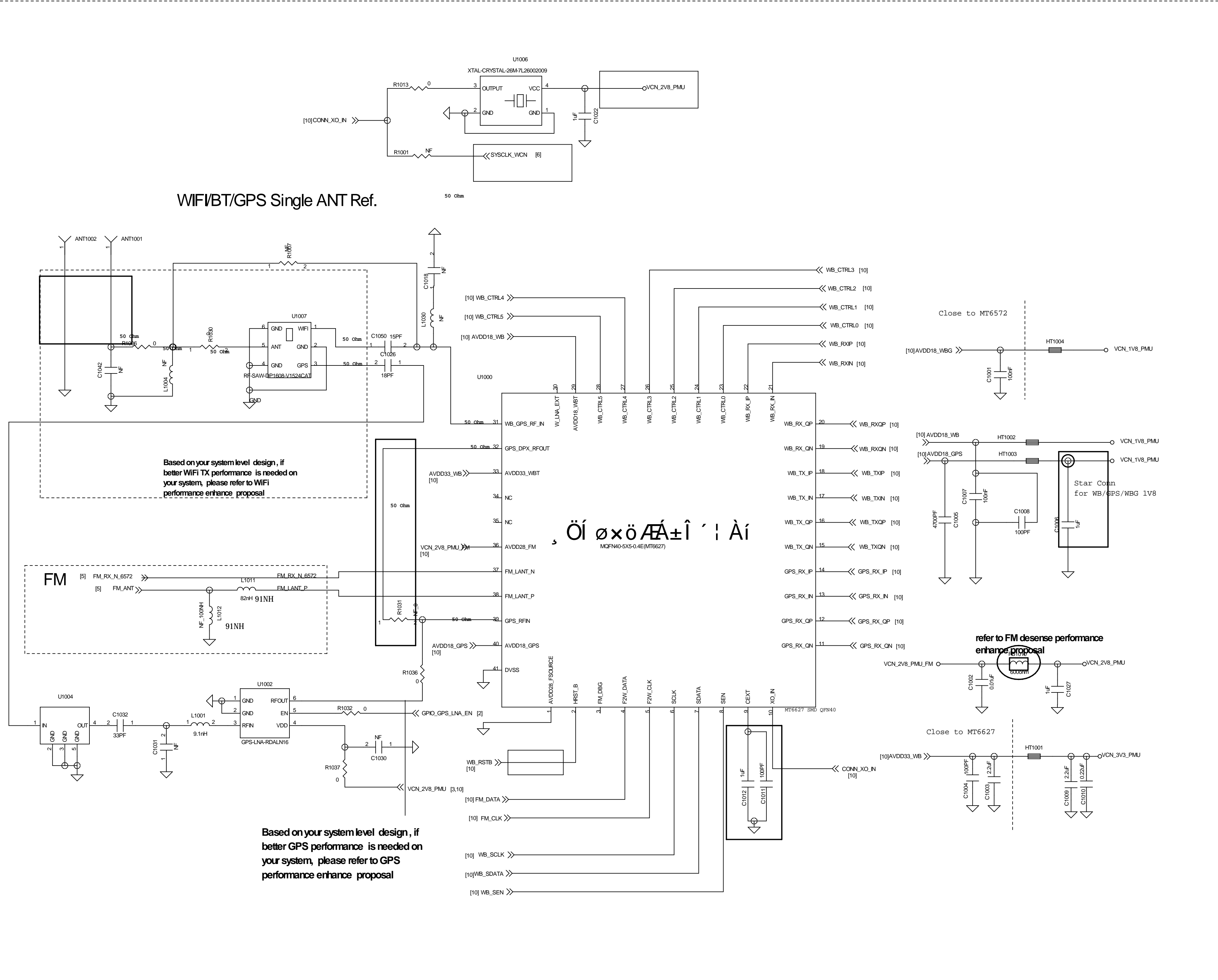
TITLE:	Z7-PVT	REV:	PVT
DOCUMENT NO:	08_LCD_CTP	SIZE:	A1
DEPARTMENT:	Hardware DEPT.		
COMPANY:	WINGTEC		
DESIGNER:	<DESIGNER>	Last Saved Date:	<undefined>
SHEET:	8	OF	13



MAIN_camera



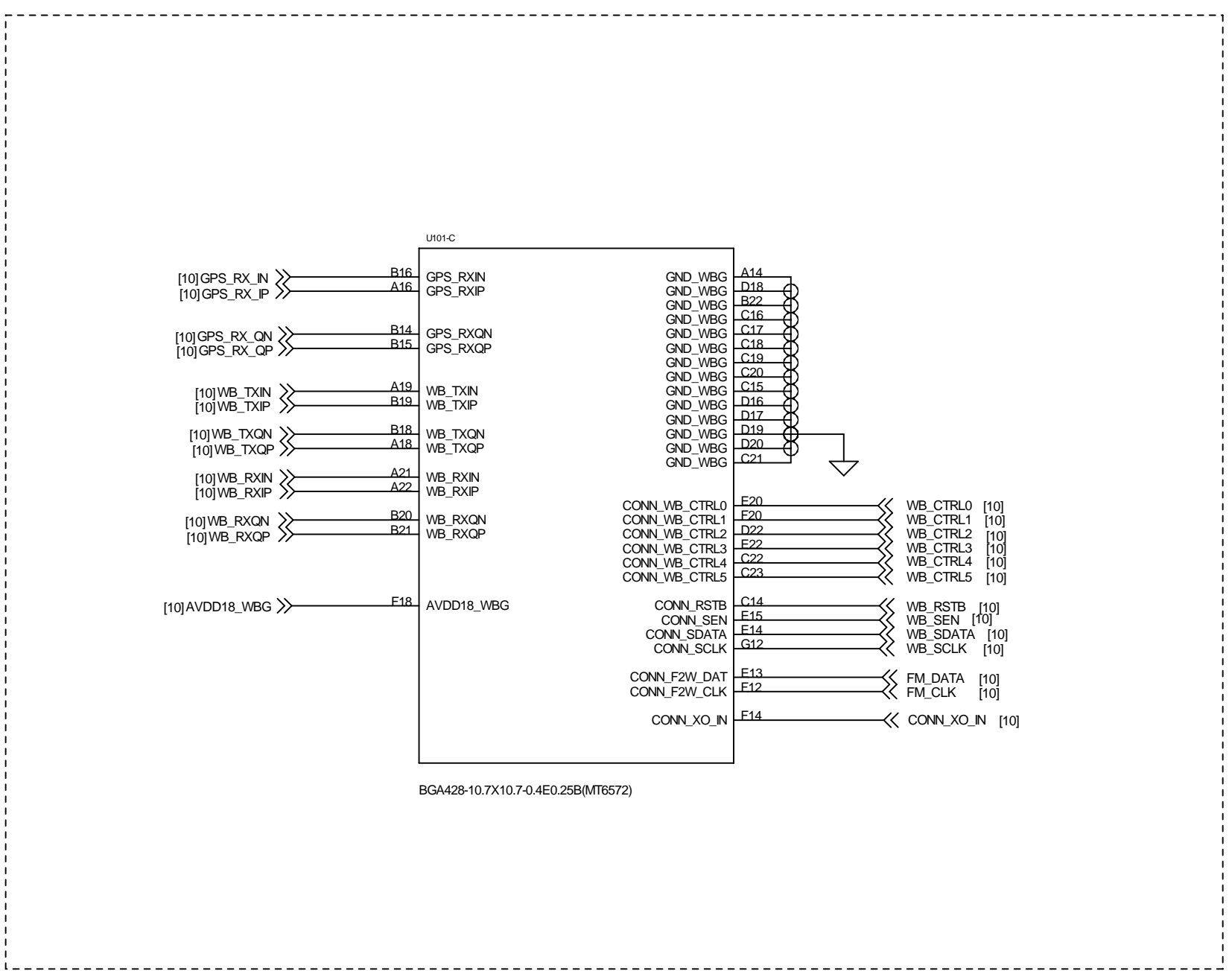
WiFi/BT/GPS Single ANT Ref.



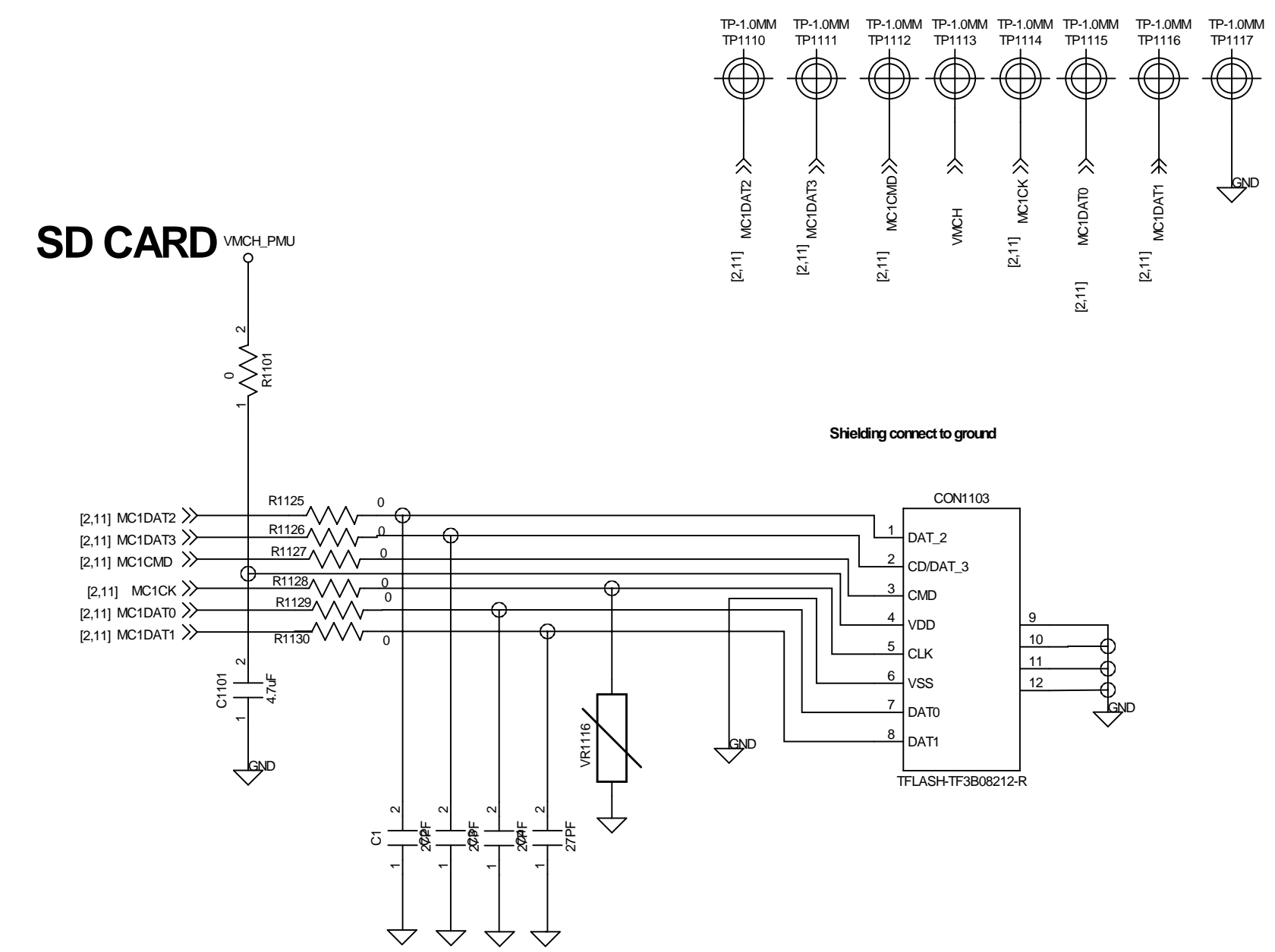
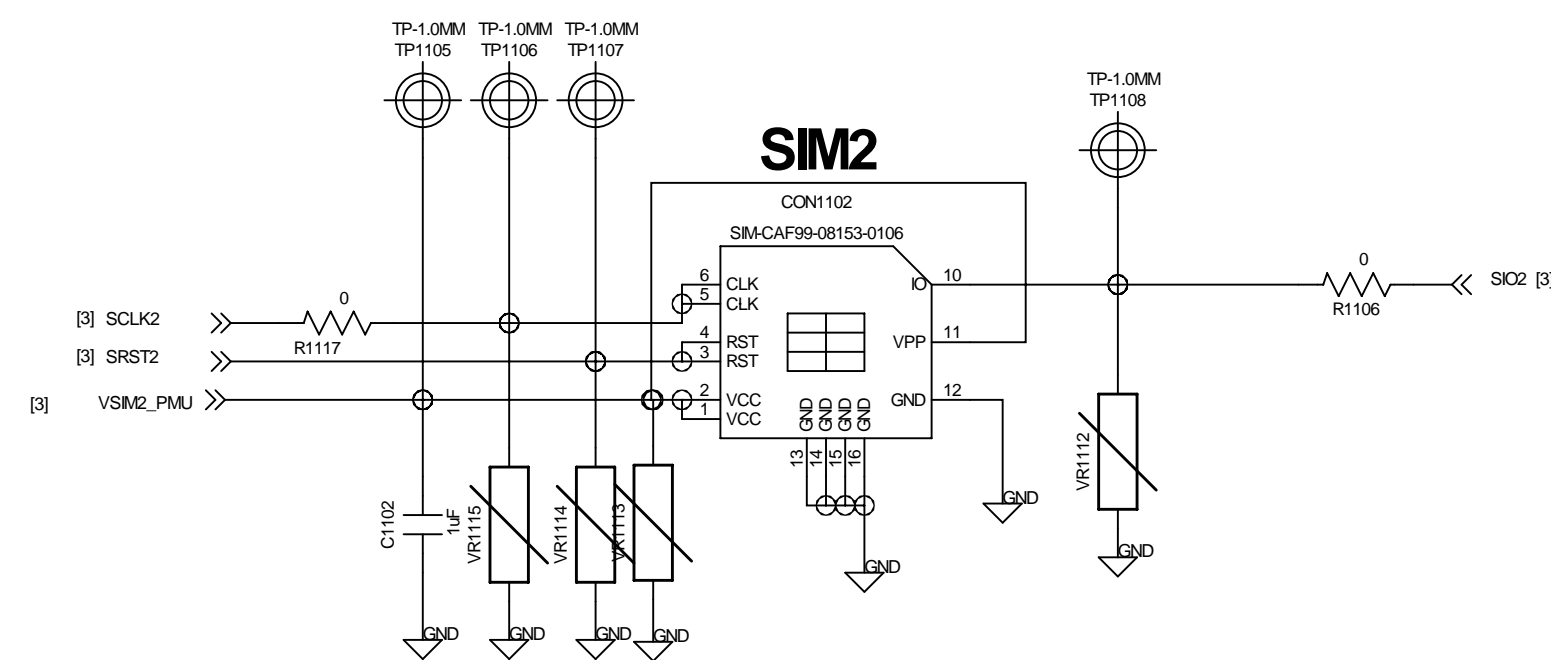
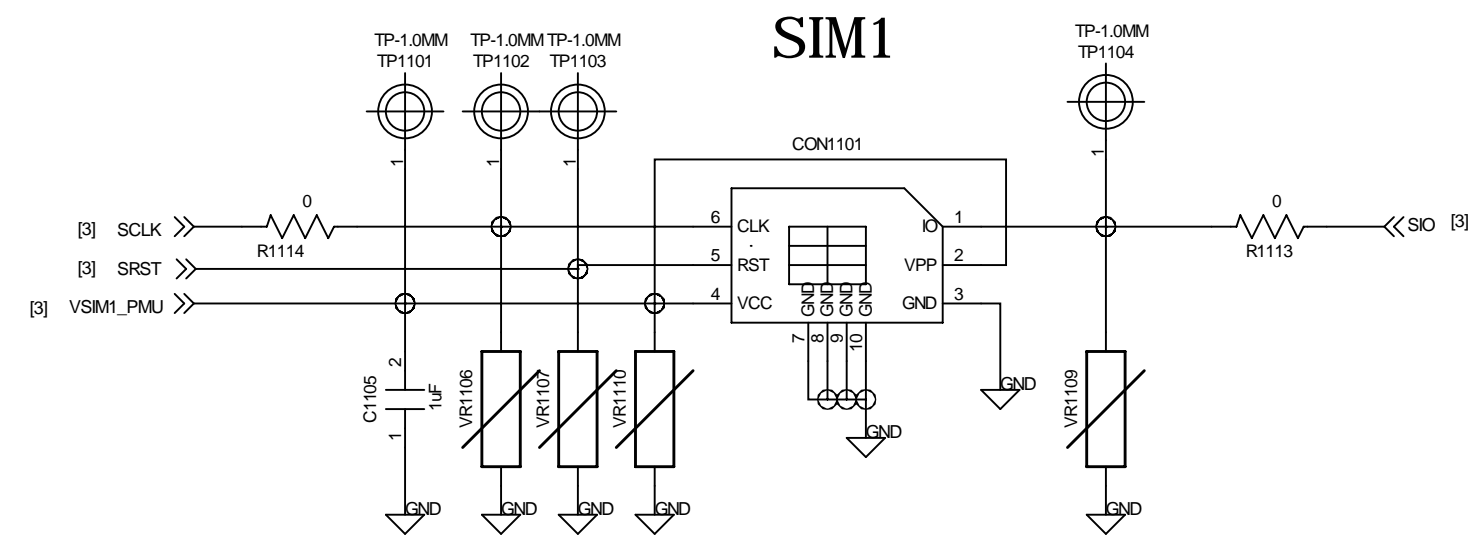
Based on your system level design, if better WiFi TX performance is needed on your system, please refer to WiFi performance enhance proposal

Based on your system level design, if better GPS performance is needed on your system, please refer to GPS performance enhance proposal

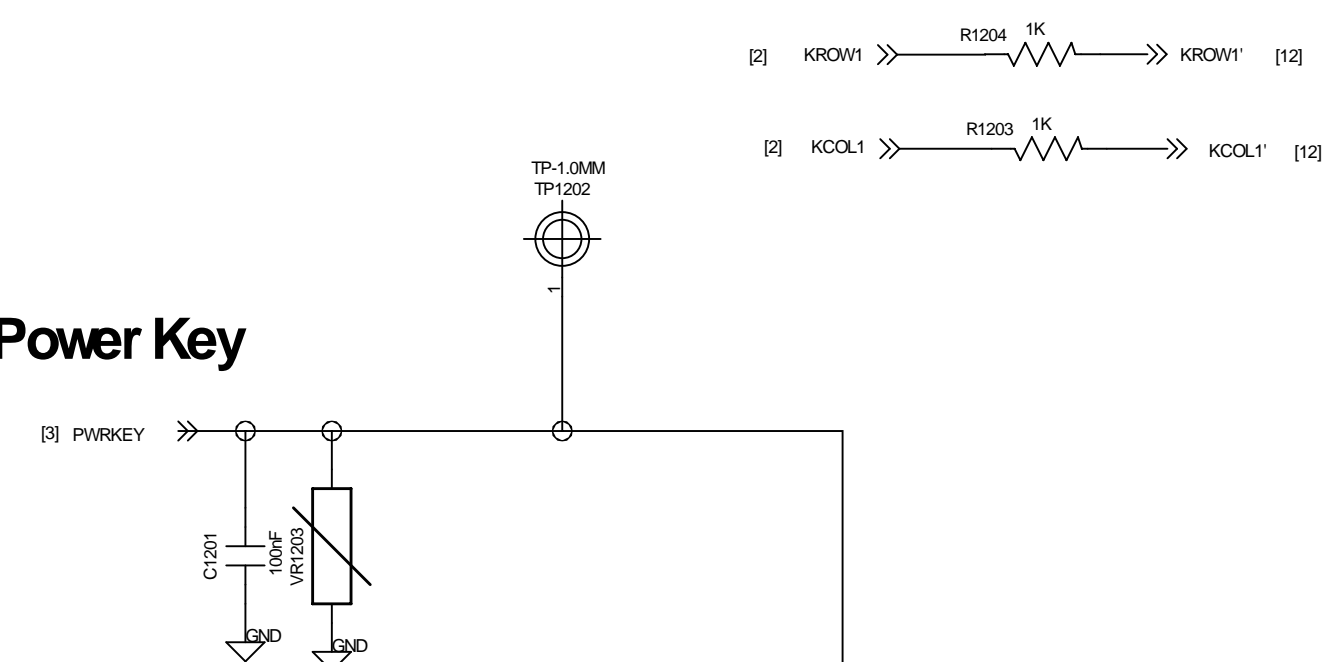
refer to FM desense performance enhance proposal



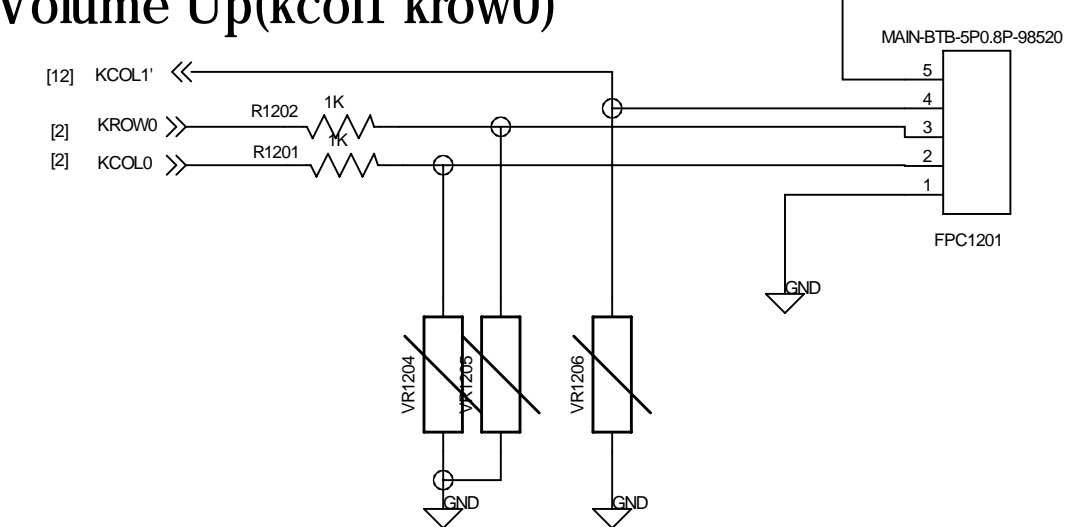
TITLE:	Z7-PVT	REV:	PVT
DOCUMENT NO:	10_BT_FM_GPS_WIFI_MT6627	SKED:	A1
DEPARTMENT:	Hardware DEPT.		
COMPANY:	WINGTEC		
DESIGNER:	<DESIGNER>	Last Saved Date:	<undefined>
SHEET:	10	OF	13



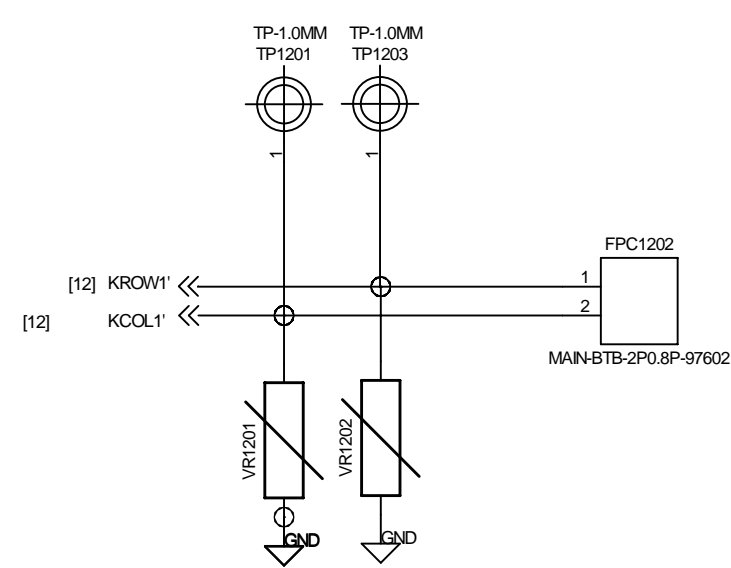
Power Key



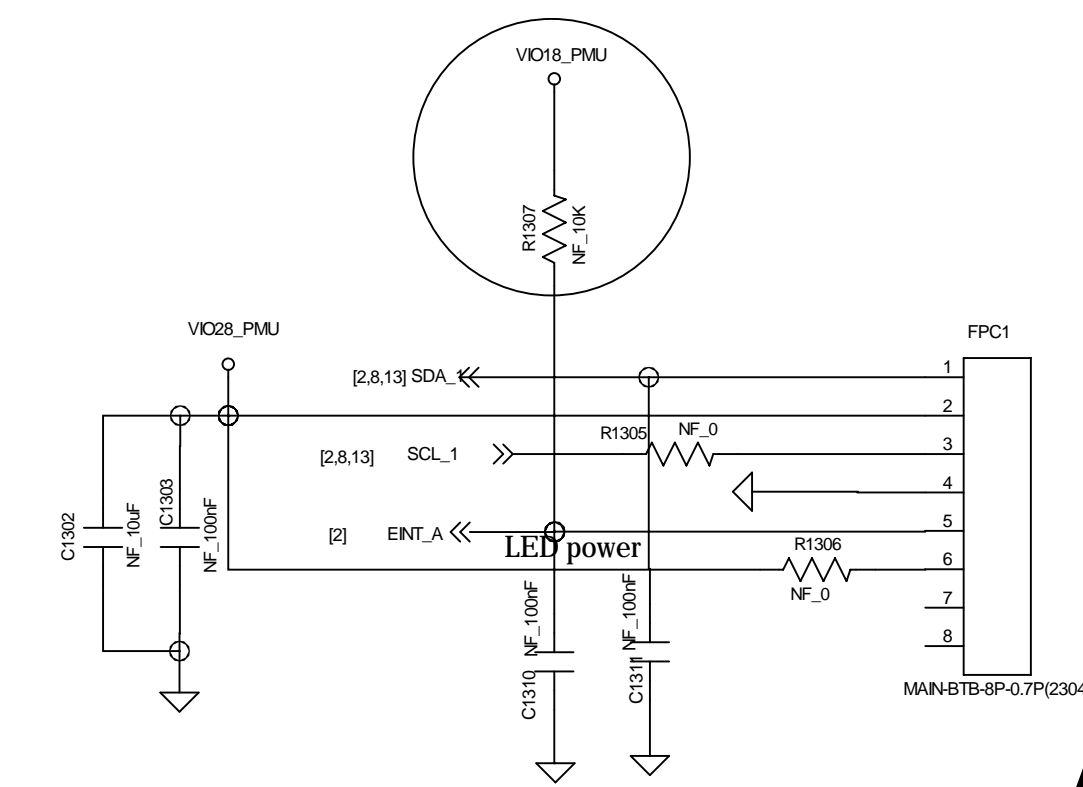
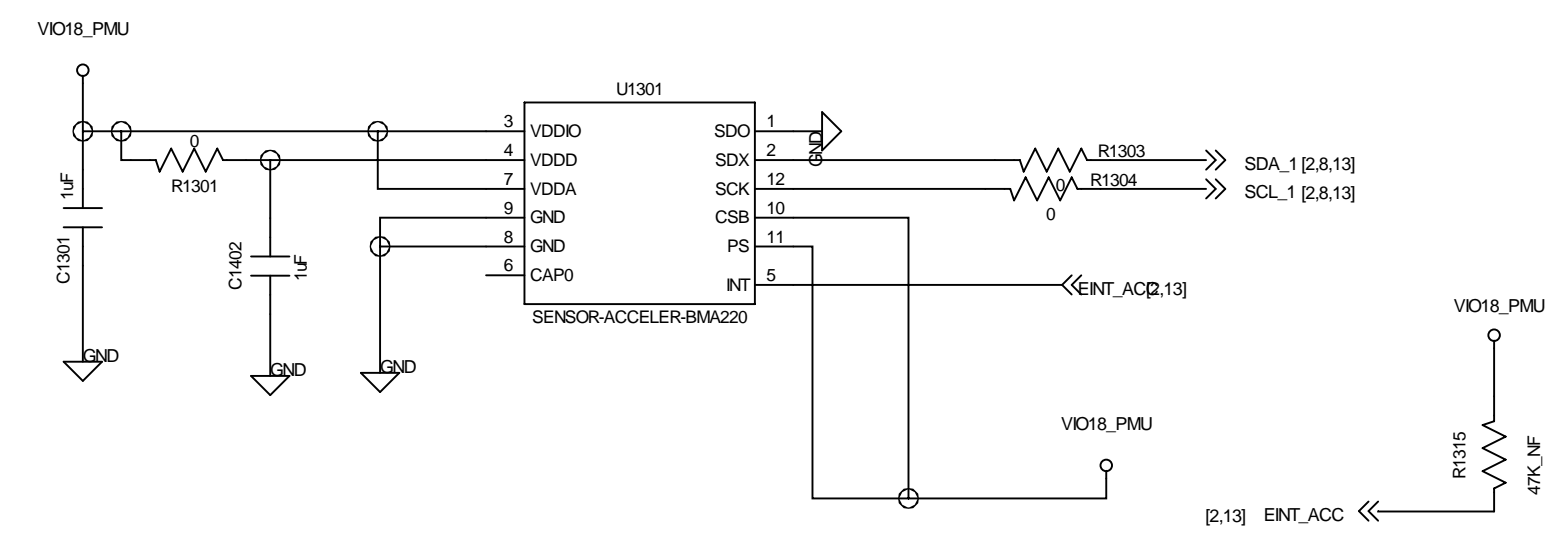
Volume Up(kcol1 krow0)



Volume Down(kcol0 krow0)

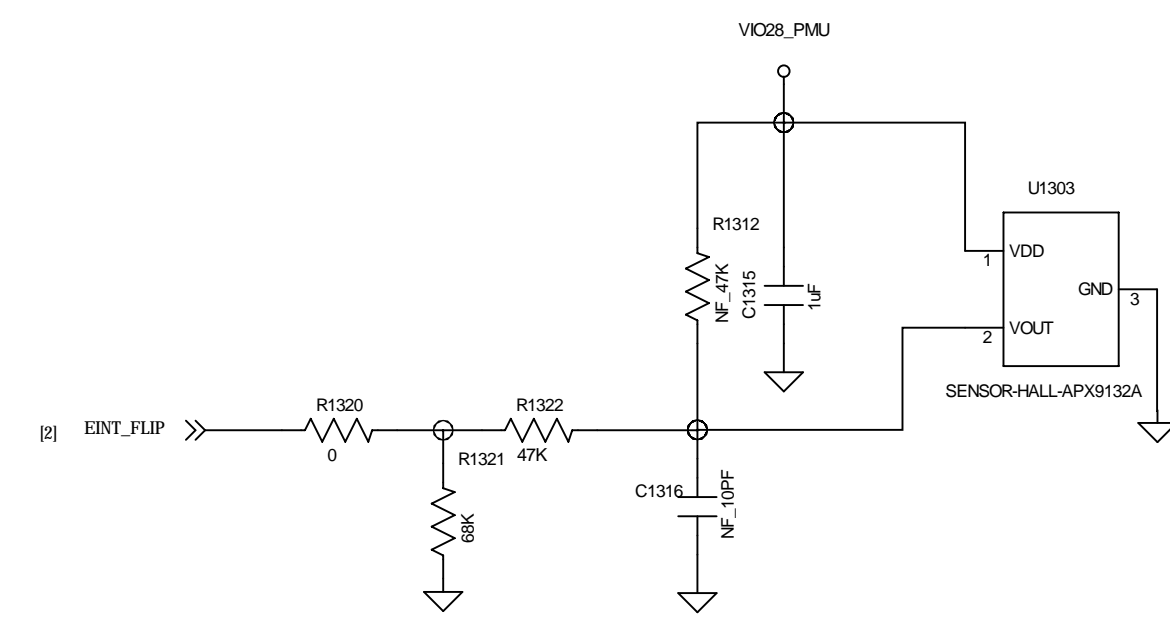


TITLE:	Z7-PVT	REV:	PVT
DOCUMENT NO:	12_KEYPAD	SIZE:	A1
DEPARTMENT:	Hardware DEPT.		
COMPANY:	WINGTEC		
DESIGNER:	<DESIGNER>	Last Saved Date:	<undefined>
		SHEET:	12 OF 13



ALS+PS+IR

HALL



TITLE:	Z7-PVT	REV:	PVT
DOCUMENT NO:	13_SENSORS	SIZE:	A1
DEPARTMENT:	Hardware DEPT.		
COMPANY:	WINGTEC		
DESIGNER:	<DESIGNER>	Last Saved Date:	<undefined>
SHEET:	13	OF	13